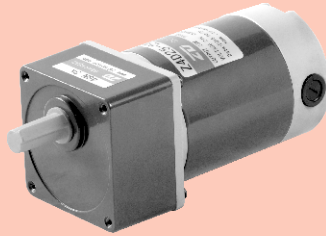


直流电动机 DC MOTORS

■ 25W □ 80mm



电机性能参数 Motor Performance Parameters

型号 Model	电压 Voltage	功率 Power	空载参数No-load Parameters		负载参数Load Parameters			电刷寿命 Brush Life	电机重量 Motor Weight
			转速Speed	电流Current	转速Speed	力矩Torque	电流Current		
	V	W	r/min	A	r/min	mN.m	A	H	kg
Z4D25-12□	12	25	3200	1.4Max.	3100	77	3.6	2000	1.7
Z4D25-24□	24	25	3000	0.7Max.	2850	84	1.7	2000	1.7
Z4D25-90□	90	25	3200	0.2Max.	3000	80	0.5	2000	1.7

●电机电压、功率及转速可在配件尺寸等条件下根据客户要求定制。

Motor voltage, power and speed will be customized according to his requestment under the allowed circumstance of adoptable dimension.

种类 Type

● 电动机 Motor

机型 Type	型号Model	
	齿轮轴型 Pinion Shaft	圆轴型 Round Shaft
导线型 Lead Wire Type	Z4D25-12GN	Z4D25-12A
	Z4D25-24GN	Z4D25-24A
	Z4D25-90GN	Z4D25-90A

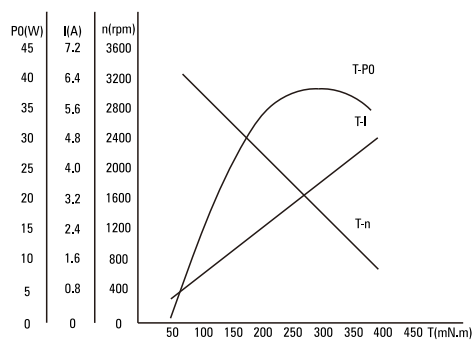
● 平行轴减速器 (另售) Parallel Shaft Gearhead (Sold Separately)

减速器种类 Gearhead Type	减速器型号 Gearhead Model	减速比 Gear Ratio
长寿命●低噪音 Long Life ● Low Noise	4GN□K	3、3.6、5、6、7.5、9、10、12.5、15、18、20、25、30、36、40、50、60、75、90、100、120、150、180、200
	4GN10XK (中间减速器 Decimal Gearhead)	

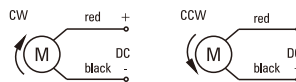
●减速器型号的□中为减速比的数值

Enter the gear ratio in the box (□) within the model name

● 电机特性曲线 Characteristic Curve Of Motor



● 电机接线图 Wiring Diagram Of Motor



●标准引出线长度: 300mm±10, 型号: UL1015, 规格: AWG20; 电机引出线长度、型号在配件尺寸等条件允许的情况下可根据客户要求定制。

Standard length of lead wire: 300mm±10, model: UL1015, type: AWG20; lead wire length, model will be customerised by dient requestmant under allowed circumstance of adoptable dimension.

■ 装有减速器时的容许转矩 Gear Motor-Torque Table

- 减速器另售·中间减速器另售。
Gearheads are sold separately. Decimal gearheads are not available.
- 减速品型号的□中为减速比的数值。
Enter the gear ratio in the box (□) within the model name.
- □色表示与电动机同一方向运转，其他则为相反方向。
The colored background □ indicates the same rotating direction of the motor while the rotating direction of others are opposite.
- 转速是以电动机的额定转速为基准除以减速比而算出来的数值。实际转速将随负载大小变化而比所示数值减少2%~20%左右。
The speed is calculated by dividing the motor's synchronous speed by the gear ratio. The actual speed is 2%~20% less than the displayed value, depending on the size of the load.
- 希望以大于下表的减速比进行进一步减速时，可在电动机与减速机之间安装减速比为10的中间减速器。
这时的容许转矩为8N·m。
To reduce the speed beyond the gear ratio in the table, attach a decimal gearhead (gear ratio:10) between the gearhead and motor. In that case, the permissible torque is 8N·m.

■ 容许力矩单位 Allowance Torque Unit : 上段 Upside (N.m) /下段 Belowside (kgf.cm)

型号 Type	减速比 Gear Ratio	3	3.6	5	6	7.5	9	10	12.5	15	18	20	25	30	36	40	50	60	75	90	100	120	150	180	200
Z4D25-24GN	转速 Speed r/min	950	792	570	475	380	317	285	228	190	158	143	114	95	79	71	57	48	38	32	29	24	19	16	14
	4GN□K	0.20	0.24	0.34	0.41	0.51	0.61	0.68	0.85	1.02	1.22	1.36	1.53	1.83	2.20	2.44	3.05	3.30	4.12	4.95	5.50	6.60	8.00	8.00	8.00
		1.99	2.39	3.32	3.99	4.99	5.98	6.65	8.31	10.0	12.0	13.3	15.0	18.0	21.5	23.9	29.9	32.3	40.4	48.5	53.9	64.6	80.0	80.0	80.0

■ 容许悬挂负载 · 容许轴向负载 To Allow The Hoisting Of The Load Allow Axial Load

电动机 (圆轴型) → P215 Motor (Round shaft) → P215
减速机 → P215 Gearhead → P215

■ 减速机的容许负载惯性惯量 J Permissible Load Inertia J For Gearhead

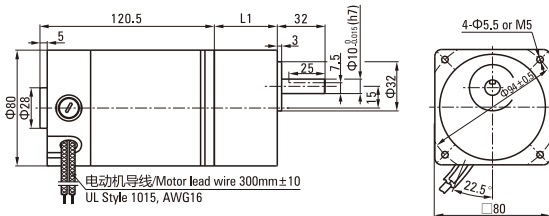
→ P215页 → P215

■ 外形图 (单位 mm) Dimensions (Unit mm)

减速机附有安装用螺丝 Mounting screws are included with gearhead.

● 导线型 Lead Wiring Type

重量 Weight : 电动机 Motor : 1.7kg 减速器 Gearhead : 0.80kg



电动机型号 Motor Model	减速器型号 Gearhead Model	减速比 Gear Ratio	L1
Z4D25-12GN Z4D25-24GN Z4D25-90GN	4GN□K	3~200	42.5

- 减速器型号的□中为减速比的数值
Enter the gear ratio in the box (□) within the model name
- 减速比3~18可以做成短箱体 (L1=32)
Gear ratio 3~18, short case is possible (L1=32)

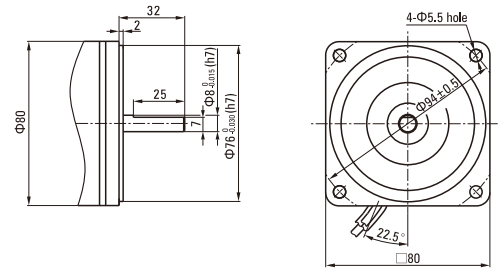
● 键·键槽 (减速器附件)

Key·Keyway (The Key Is Included With The Gearhead)



● 圆轴型的转轴部分 Shaft Section of Round Shaft Type

除重量及轴部外电动机外形与齿轮轴型相同。
Excluding weight and the shaft section motor shape are the same as those of the pinion shaft type.



● 中间减速器 Decimal gearhead

可安装在GN齿轮轴型上 Can be connected to GN pinion shaft type
电动机外形与齿轮轴型相同
4GN10X
重量 Weight : 0.41kg

