

AC&DC GEAR MOTOR CATALOGUE

181-218

ZD LEADER

DC GEAR MOTOR 直流减速电动机



电动机型号说明 Description Of Motor Model

Z
①
5(5)
②
D(W)
③
60
④
-
24
⑤
GU
⑥
-
30S
⑦

①	公司名称 Company	中大电机 ZD MOTOR					
②	机座号 Code	2	3	4	5	55	6
	电机安装法兰 Mounting flange (mm)	60×60	70×70	80×80	90×90	90×90	104×104
	机壳直径 Case diameter (mm)	60	60	80	80	90	90
③	电机种类 Motor type	D: 直流电动机 DC motor DW: 针对60、70系列电机D后加W表示外置电刷电机 For 60、70 series motor, DW means external brush motor					
④	输出功率 Output power	(例 Example) 60:60W					
⑤	电源电压 Voltage	(例 Example) 24:24V					
⑥	电机轴形状 Shape of motor shaft	GN: 普通型斜齿 GN: General helical gear GU: 加强型斜齿 GU: Reinforced helical gear			A1: 铣键槽 A1: Milling keyway A: 铣扁 A: Flat type		
⑦	电机转速 Speed	(例 Example) 30S:3000RPM					

备注：如果电机需刹车器可在型号最好增加-M符号，如Z5(5)D60-24GU-30S-M，刹车器电压与电机额定电压相同；型号中电机可解读为机壳外径90mm、GU型、额定电压24VDC、额定功率60W、额定转速3000RPM、配24VDC刹车器。

Note: we use M to symbolise the brake, such as Z5(5)D60-24GU-30S-M, the brake voltage is the same as the rated voltage of the motor, Type of motor can be interpreted as a case diameter of 90mm, GU type, rated voltage 24VDC, rated power 60W, rated speed of 3000RPM, with brake 24VDC.

减速器型号说明 Description Of Reducer Model

5
①
GN
②
50
③
K
④

①	型号尺寸 Model dimension	2: 60mm 3: 70mm 4: 80mm 5: 90mm 6: 104mm
②	齿轮种类 Gear type	Gn: 普通型斜齿轴 GN: General helical gear GU: 加强型斜齿轴 GU: Reinforced helical gear
③	减速比 Gear ratio	例 Example: 50 减速比 Gear ratio of 1:50 10X 仅限减速器1:10的中间减速比 10X denotes the decimal gearhead of ratio 1:10
④	轴承种类 Bearing type	K: 滚珠轴承 (对GU型方箱体标注为KB) K: Bearing (Make KB for type GU square case)

备注：非标准分体式的编号为：在电动型号或减速型号前加“V”（请在订货时写明具体参数要求）

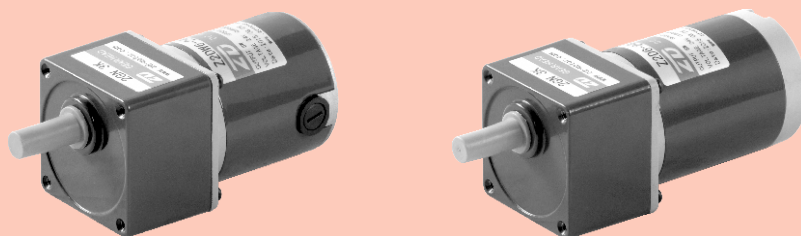
Note: The code of the non-standard split type is to add "V" before the model number of the motor or reducer (Please specify the detailed parameter requirement in the purchase order)

电动机的一般规格 Deneral Specification Of Motors

项目 Items	规格 Specifications
绝缘电阻 Insulation resistance	于常温、常湿下的电动机额定运行后，以DC 500V电阻表测量线圈-外壳间时，测量值为20兆欧以上。 In the circumstance of normal ambient temperature and humidity, the resistance can be up to 20MΩ or more when DC 500V megger is applied between the windings and the frame after rated motor operations.
绝缘耐压 Dielectric withstanding	于常温、常湿下电动机额定运行后，在线圈和机壳间施加一分钟50Hz或60Hz、1.5kV的电压，亦无异常。 In the circumstance of normal ambient temperature and humidity, there will be no problem to withstand 1.5kV at 50/60Hz between the windings and the frame for 1 minute after rated motor operation.
温度上升 Temperature rise	运转电机后，用温度计法来测量时，电机表面最热点温升数值在80℃以下。 The temperature rise should be lower than 80℃ measured by resistance method when the motor is working.
绝缘等级 Insulation class	B级 (130℃) Class B (130℃)
使用温度 Use temperature	-10℃~+40℃ (无冰冻) -10℃~+40℃ (Non freezing)
使用湿度 Use humidity	85%以下 (无结露的场所) ≤85% (Place without dew)

直流电动机 DC MOTORS

6W □ 60mm



电机性能参数 Motor Performance Parameters

型号 Model	电压 Voltage V	功率 Power W	空载参数No-load Parameters		负载参数Load Parameters			电刷寿命 Brush Life H	电机重量 Motor Weight kg
			转速Speed r/min	电流Current A	转速Speed r/min	力矩Torque mN.m	电流Current A		
Z2D06-12 □	12	6	3200	0.6Max.	2950	19	0.8	2000	0.6
Z2DW06-12□	12	6	3200	0.6Max.	2950	19	0.8	2000	0.6
Z2D06-24 □	24	6	3200	0.3Max.	2950	19	0.5	2000	0.6
Z2DW06-24□	24	6	3200	0.3Max.	2950	19	0.5	2000	0.6
Z2D06-90 □	90	6	3000	0.2Max.	2800	20	0.3	2000	0.6
Z2DW06-90□	90	6	3000	0.2Max.	2800	20	0.3	2000	0.6

- 电机电压、功率及转速可在配件尺寸等条件下根据客户要求定制。
Motor voltage, power and speed will be customized according to his requestment under the allowed circumstance of adoptable dimension.
- D后如加W即Z2DW06-12GN表示外置电刷齿轴电机，如无W则为标准内置电刷齿轴电机：外置电刷电机，用户可自行在外部更换电刷；内置电刷电机更换电刷时需将电机拆装后方可更换。
We use W after D in the model to express the external brush motor, such as Z2DW06-12GN. If no W, it means the standard internal brush motor. For external brush motor, you can replce the brush directly. For internal ones, we need to disassembly the motor first.

种类 Type

电动机 Motor

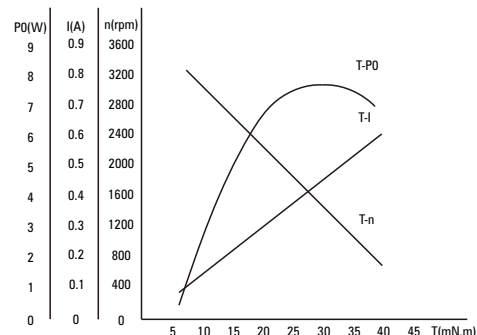
机型 Type	型号Model	
	齿轮轴型 Pinion Shaft	圆轴型 Round Shaft
导线型 Lead Wire Type	Z2D06-12GN	Z2D06-12A
	Z2DW06-12GN	Z2DW06-12A
	Z2D06-24GN	Z2D06-24A
	Z2DW06-24GN	Z2D06-24A
	Z2D06-90GN	Z2D06-90A
	Z2DW06-90GN	Z2DW06-90A

平行轴减速器（另售） Parallel Shaft Gearhead (Sold Separately)

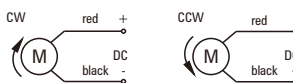
减速器种类 Gearhead Type	减速器型号 Gearhead Model	减速比 Gear Ratio
长寿命•低噪音 Long Life • Low Noise	2GN□K	3、3.6、5、6、7.5、9、10、 12.5、15、18、20、25、30、 36、40、50、60、75、90、 100、120、150、180、200
	2GN10XK (中间减速器 Decimal Gearhead)	

- 减速器型号的□中为减速比的数值
Enter the gear ratio in the box (□) within the model name

电机特性曲线 Characteristic Curve Of Motor



电机接线图 Wiring Diagram Of Motor



- 标准引出线长度：300mm±10，型号：UL1015，规格：AWG20；电机引出线长度、型号在配件尺寸等条件允许的情况下可根据客户要求定制。
Stanclard length of lead wire: 300mm±10, model: U1015, type: AWG20; lead wire length, model will be customerised by dient requestmant under allowed circumstance of adoptable dimension.

■ 装有减速器时的容许转矩 Gear Motor-Torque Table

- 减速器另售·中间减速器另售。
Gearheads are sold separately. Decimal gearheads are not available.
- 减速品型号的□中为减速比的数值。
Enter the gear ratio in the box (□) within the model name.
- □色表示与电动机同一方向运转，其他则为相反方向。
The colored background □ indicates the same rotating direction of the motor while the rotating direction of others are opposite.
- 转速是以电动机的额定转速为基准除以减速比而算出来的数值。实际转速将随负载大小变化而比所示数值减少2%~20%左右。
The speed is calculated by dividing the motor's synchronous speed by the gear ratio. The actual speed is 2%~20% less than the displayed value, depending on the size of the load.
- 希望以大于下表的减速比进行进一步减速时，可在电动机与减速机之间安装减速比为10的中间减速机。
这时的容许转矩为3N·m。
To reduce the speed beyond the gear ratio in the table, attach a decimal gearhead (gear ratio:10) between the gearhead and motor. In that case, the permissible torque is 3N·m.

■ 容许力矩单位 Allowance Torque Unit : 上段 Upside (N.m) / 下段 Belowside (kgf.cm)

型号 Type	减速比 Gear Ratio	3	3.6	5	6	7.5	9	10	12.5	15	18	20	25	30	36	40	50	60	75	90	100	120	150	180	200
Z2D06-24GN	转速 Speed r/min	983	819	590	492	393	328	295	236	197	164	148	118	98	82	74	59	49	39	33	30	25	20	16	15
	2GN□K	0.05	0.06	0.08	0.09	0.12	0.14	0.16	0.20	0.24	0.28	0.28	0.35	0.42	0.51	0.57	0.71	0.76	0.96	1.15	1.27	1.53	1.91	2.29	2.55
		0.46	0.56	0.77	0.93	1.16	1.39	1.54	1.93	2.31	2.78	2.78	3.47	4.16	5.00	5.55	6.94	7.49	9.37	11.2	12.5	15.0	18.7	22.5	25.0

■ 容许悬挂负载·容许轴向负载 To Allow The Hoisting Of The Load Allow Axial Load

电动机 (圆轴型) → P215页 Motor (Round shaft) → P215
减速机 → P215页 Gearhead → P215

■ 减速机的容许负载惯性惯量 J Permissible Load Inertia J For Gearhead

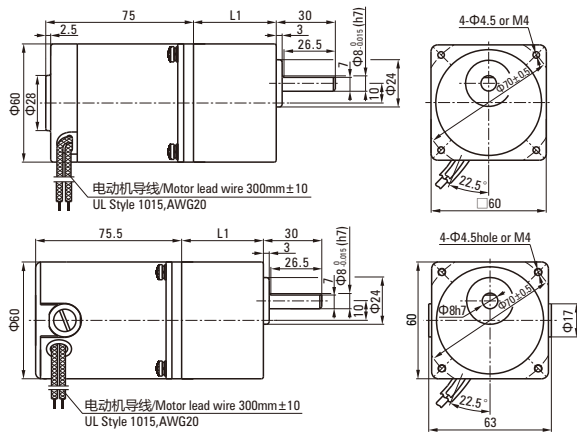
→ P215页 → P215

■ 外形图 (单位 mm) Dimensions (Unit mm)

减速器附有安装用螺丝 Mounting screws are included with gearhead.

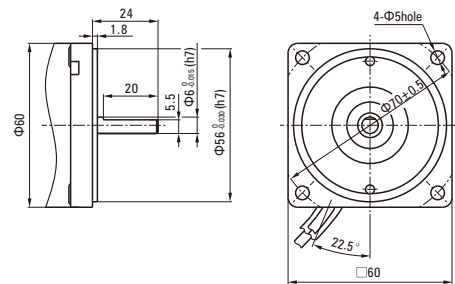
● 导线型 Lead Wiring Type

重量 Weight : 电动机 Motor : 0.6kg 减速器 Gearhead : 0.4kg



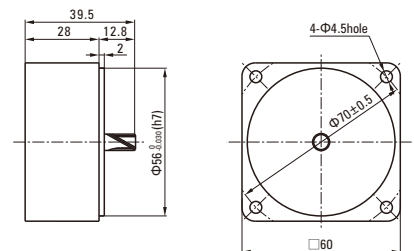
● 圆轴型的转轴部分 Shaft Section Of Round Shaft Type

除重量及轴部外电动机外形与齿轮轴型相同。
Excluding weight and the shaft section motor shape are the same as those of the pinion shaft type.



● 中间减速器 Decimal Gearhead

可安装在GN齿轮轴型上 Can be connected to GN pinion shaft type
电动机外形与齿轮轴型相同
2GN10X
重量 Weight : 0.24kg

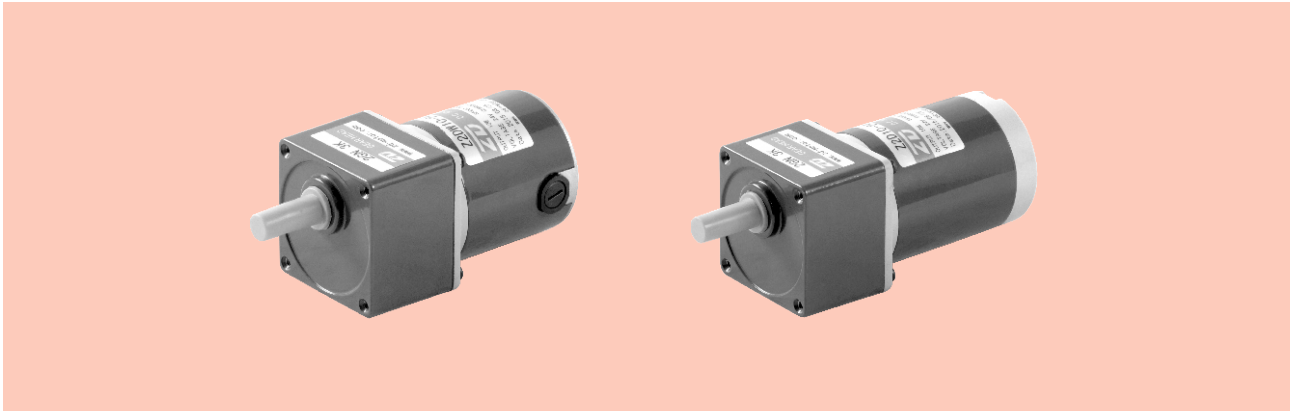


电动机型号 Motor Model	减速器型号 Gearhead Model	减速比 Gear Ratio	L1
Z2D06-12GN Z2DW06-12GN Z2D06-24GN Z2DW06-24GN Z2D06-90GN Z2DW06-90GN	2GN□K	3~200	41

- 减速器型号的□中为减速比的数值 Enter the gear ratio in the box (□) within the model name
- 减速比3~18可以做成短箱体 (L1=32) Gear ratio 3~18, short case is possible (L1=32)

直流电动机 DC MOTORS

10W □ 60mm



电机性能参数 Motor Performance Parameters

型号 Model	电压 Voltage V	功率 Power W	空载参数No-load Parameters		负载参数Load Parameters			电刷寿命 Brush Life H	电机重量 Motor Weight kg
			转速Speed r/min	电流Current A	转速Speed r/min	力矩Torque mN.m	电流Current A		
Z2D10-12 □	12	10	3200	1.0Max.	2800	34	2.0	2000	0.7
Z2DW10-12□	12	10	3200	1.0Max.	2800	34	2.0	2000	0.7
Z2D10-24 □	24	10	3300	0.5Max.	3000	32	0.9	2000	0.7
Z2DW10-24□	24	10	3300	0.5Max.	3000	32	0.9	2000	0.7
Z2D10-90 □	90	10	3200	0.3Max.	2800	34	0.6	2000	0.7
Z2DW10-90□	90	10	3200	0.3Max.	2800	34	0.6	2000	0.7

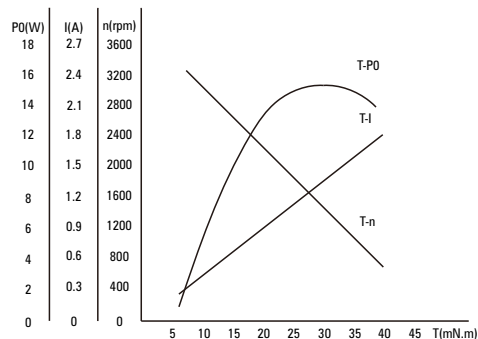
- 电机电压、功率及转速可在配件尺寸等条件下根据客户要求定制。
Motor voltage, power and speed will be customized according to his requestment under the allowed circumstance of adoptable dimension.
- D后如加W即Z2DW06-12GN表示外置电刷齿轴电机，如无W则为标准内置电刷齿轴电机：外置电刷电机，用户可自行在外部更换电刷；内置电刷电机更换电刷时需将电机拆装后方可更换。
We use W after D in the model to express the external brush motor, such as Z2DW06-12GN. If no W, it means the standard internal brush motor. For external brush motor, you can replce the brush directly. For internal ones, we need to disassembly the motor first.

种类 Type

电动机 Motor

机型 Type	型号Model	
	齿轮轴型 Pinion Shaft	圆轴型 Round Shaft
导线型 Lead Wire Type	Z2D10-12GN	Z2D10-12A
	Z2DW10-12GN	Z2DW10-12A
	Z2D10-24GN	Z2D10-24A
	Z2DW10-24GN	Z2D10-24A
	Z2D10-90GN	Z2D10-90A
	Z2DW10-90GN	Z2DW10-90A

电机特性曲线 Characteristic Curve Of Motor

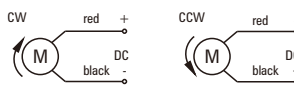


平行轴减速器 (另售) Parallel Shaft Gearhead (Sold Separately)

减速器种类 Gearhead Type	减速器型号 Gearhead Model	减速比 Gear Ratio
长寿命•低噪音 Long Life • Low Noise	2GN□K	3、3.6、5、6、7.5、9、10、 12.5、15、18、20、25、30、 36、40、50、60、75、90、 100、120、150、180、200
	2GN10XK (中间减速器 Decimal Gearhead)	

- 减速器型号的□中为减速比的数值
Enter the gear ratio in the box (□) within the model name

电机接线图 Wiring Diagram Of Motor



- 标准引出线长度: 300mm±10, 型号: UL1015, 规格: AWG20; 电机引出线长度、型号在配件尺寸等条件允许的情况下可根据客户要求定制。
Stanclard length of lead wire: 300mm±10, model: UL1015, type: AWG20; lead wire length, model will be customerised by dient requestmant under allowed circumstance of adoptable dimension.

■ 装有减速器时的容许转矩 Gear Motor-Torque Table

- 减速器另售·中间减速器另售。
Gearheads are sold separately. Decimal gearheads are not available.
- 减速品型号的□中为减速比的数值。
Enter the gear ratio in the box (□) within the model name.
- □色表示与电动机同一方向运转，其他则为相反方向。
The colored background □ indicates the same rotating direction of the motor while the rotating direction of others are opposite.
- 转速是以电动机的额定转速为基准除以减速比而算出来的数值。实际转速将随负载大小变化而比所示数值减少2%~20%左右。
The speed is calculated by dividing the motor's synchronous speed by the gear ratio. The actual speed is 2%~20% less than the displayed value, depending on the size of the load.
- 希望以大于下表的减速比进行进一步减速时，可在电动机与减速机之间安装减速比为10的中间减速机。
这时的容许转矩为3N·m。
To reduce the speed beyond the gear ratio in the table, attach a decimal gearhead (gear ratio:10) between the gearhead and motor. In that case, the permissible torque is 3N·m.

■ 容许力矩单位 Allowance Torque Unit : 上段 Upside (N.m) /下段 Belowside (kgf.cm)

型号 Type	减速比 Gear Ratio	3	3.6	5	6	7.5	9	10	12.5	15	18	20	25	30	36	40	50	60	75	90	100	120	150	180	200
Z2D10-24GN	转速 Speed r/min	1000	833	600	500	400	333	300	240	200	167	150	120	100	83	75	60	50	40	33	30	25	20	17	15
	2GN□K	0.08	0.09	0.13	0.15	0.19	0.23	0.26	0.32	0.39	0.46	0.46	0.58	0.70	0.84	0.93	1.16	1.25	1.75	1.88	2.09	2.51	3.00	3.00	3.00
		0.76	0.91	1.26	1.52	1.90	2.27	2.53	3.16	3.79	4.55	4.55	5.69	6.82	8.19	9.10	11.4	12.3	15.4	18.4	20.5	24.6	30.0	30.0	30.0

■ 容许悬挂负载·容许轴向负载 To Allow The Hoisting Of The Load Allow Axial Load

电动机 (圆轴型) → P215页

Motor (Round shaft) → P215

减速机 → P215页

Gearhead → P215

■ 减速机的容许负载惯性惯量 J Permissible Load Inertia J For Gearhead

→ P215页 → P215

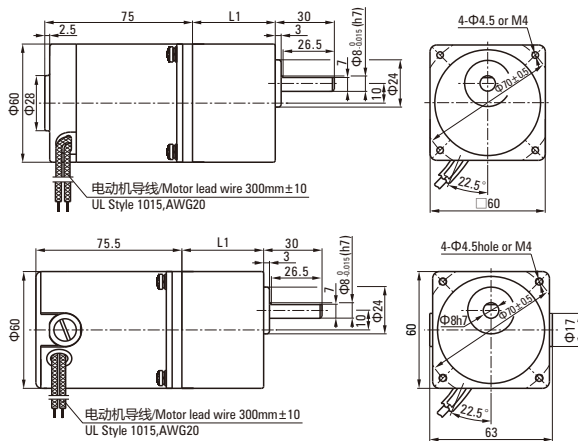
■ 外形图 (单位 mm) Dimensions (Unit mm)

减速机附有安装用螺丝 Mounting screws are included with gearhead.

● 导线型 Lead Wiring Type

重量 Weight : 电动机 Motor : 0.7kg

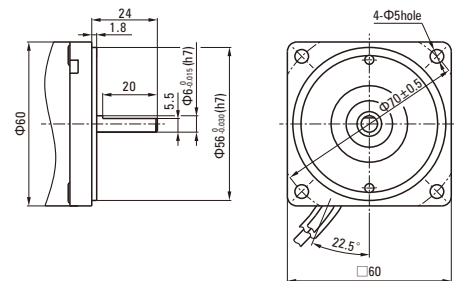
减速机 Gearhead : 0.4kg



● 圆轴型的转轴部分 Shaft Section Of Round Shaft Type

除重量及轴部外电动机外形与齿轮轴型相同。

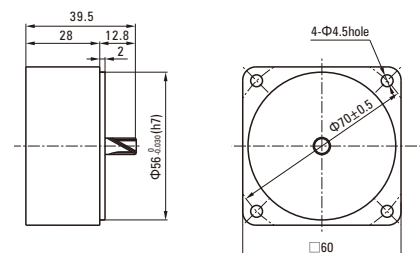
Excluding weight and the shaft section motor shape are the same as that of the pinion shaft type.



● 中间减速器 Decimal Gearhead

可安装在GN齿轮轴型上 Can be connected to GN pinion shaft type
电动机外形与齿轮轴型相同

重量 Weight : 0.24kg

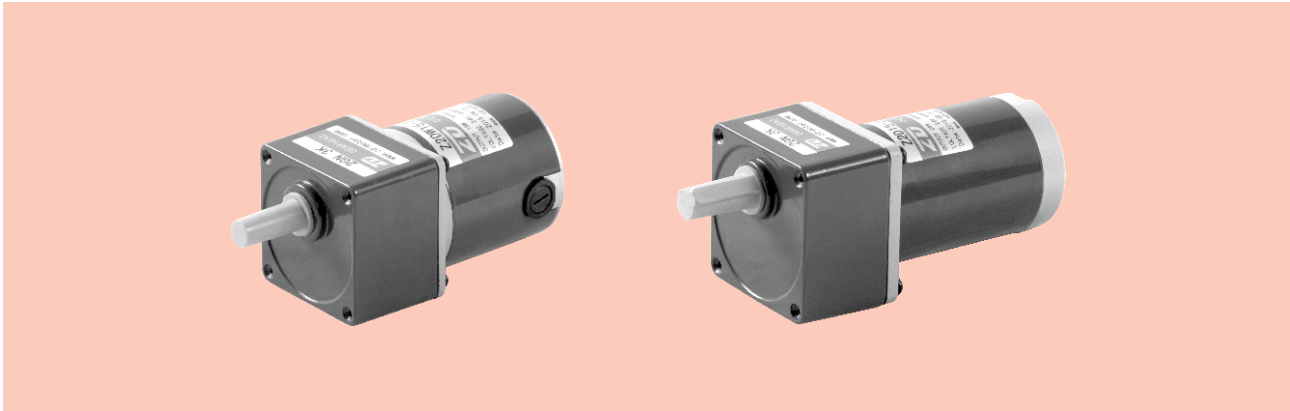


电动机型号 Motor Model	减速器型号 Gearhead Model	减速比 Gear Ratio	L1
Z2D10-12GN Z2DW10-12GN Z2D10-24GN Z2DW10-24GN Z2D10-90GN Z2DW10-90GN	2GN□K	3~200	41

- 减速器型号的□中为减速比的数值 Enter the gear ratio in the box (□) within the model name
- 减速比3~18可以做成短箱体 (L1=32) Gear ratio 3~18, short case is possible (L1=32)

直流电动机 DC MOTORS

15W □ 60mm



电机性能参数 Motor Performance Parameters

型号 Model	电压 Voltage V	功率 Power W	空载参数No-load Parameters		负载参数Load Parameters			电刷寿命 Brush Life H	电机重量 Motor Weight kg
			转速Speed r/min	电流Current A	转速Speed r/min	力矩Torque mN.m	电流Current A		
Z2D15-12 □	12	15	3200	0.8Max.	2950	48	2.0	2000	0.9
Z2DW15-12□	12	15	3200	0.8Max.	2950	48	2.0	2000	0.9
Z2D15-24 □	24	15	3300	0.4Max.	3000	48	1.0	2000	0.9
Z2DW15-24□	24	15	3300	0.4Max.	3000	48	1.0	2000	0.9
Z2D15-90 □	90	15	3200	0.2Max.	3000	48	0.4	2000	0.9
Z2DW15-90□	90	15	3200	0.2Max.	3000	48	0.4	2000	0.9

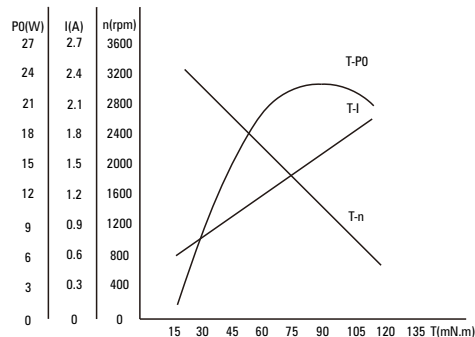
- 电机电压、功率及转速可在配件尺寸等条件下根据客户要求定制。
Motor voltage, power and speed will be customized according to his requestment under the allowed circumstance of adoptable dimension.
- D后如加W即Z2DW06-12GN表示外置电刷齿轴电机，如无W则为标准内置电刷齿轴电机：外置电刷电机，用户可自行在外部更换电刷；内置电刷电机更换电刷时需将电机拆装后方可更换。
We use W after D in the model to express the external brush motor, such as Z2DW06-12GN. If no W, it means the standard internal brush motor. For external brush motor, you can replce the brush directly. For internal ones, we need to disassembly the motor first.

种类 Type

电动机 Motor

机型 Type	型号Model	
	齿轮轴型 Pinion Shaft	圆轴型 Round Shaft
导线型 Lead Wire Type	Z2D15-12GN	Z2D15-12A
	Z2DW15-12GN	Z2DW15-12A
	Z2D15-24GN	Z2D15-24A
	Z2DW15-24GN	Z2D15-24A
	Z2D15-90GN	Z2D15-90A
	Z2DW15-90GN	Z2DW15-90A

电机特性曲线 Characteristic Curve Of Motor

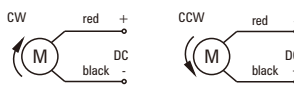


平行轴减速器 (另售) Parallel Shaft Gearhead (Sold Separately)

减速器种类 Gearhead Type	减速器型号 Gearhead Model	减速比 Gear Ratio
长寿命•低噪音 Long Life • Low Noise	2GN□K	3、3.6、5、6、7.5、9、10、 12.5、15、18、20、25、30、 36、40、50、60、75、90、 100、120、150、180、200
	2GN10XK (中间减速器 Decimal Gearhead)	

- 减速器型号的□中为减速比的数值
Enter the gear ratio in the box (□) within the model name

电机接线图 Wiring Diagram Of Motor



- 标准引出线长度: 300mm±10, 型号: UL1015, 规格: AWG20; 电机引出线长度、型号在配件尺寸等条件允许的情况下可根据客户要求定制。
Stanclard length of lead wire: 300mm±10, model: UL1015, type: AWG20; lead wire length, model will be customerised by dient requestmant under allowed circumstance of adoptable dimension.

■ 装有减速器时的容许转矩 Gear Motor-Torque Table

- 减速器另售·中间减速器另售。
Gearheads are sold separately. Decimal gearheads are not available.
- 减速品型号的□中为减速比的数值。
Enter the gear ratio in the box (□) within the model name.
- □色表示与电动机同一方向运转，其他则为相反方向。
The colored background □ indicates the same rotating direction of the motor while the rotating direction of others are opposite.
- 转速是以电动机的额定转速为基准除以减速比而算出来的数值。实际转速将随负载大小变化而比所示数值减少2%~20%左右。
The speed is calculated by dividing the motor's synchronous speed by the gear ratio. The actual speed is 2%~20% less than the displayed value, depending on the size of the load.
- 希望以大于下表的减速比进行进一步减速时，可在电动机与减速机之间安装减速比为10的中间减速机。
这时的容许转矩为3N·m。
To reduce the speed beyond the gear ratio in the table, attach a decimal gearhead (gear ratio:10) between the gearhead and motor. In that case, the permissible torque is 3N·m.

■ 容许力矩单位 Allowance Torque Unit : 上段 Upside (N·m) /下段 Belowside (kgf·cm)

型号 Type	减速比 Gear Ratio	3	3.6	5	6	7.5	9	10	12.5	15	18	20	25	30	36	40	50	60	75	90	100	120	150	180	200
Z2D15-24GN	转速 Speed r/min	1000	833	600	500	400	333	300	240	200	167	150	120	100	83	75	60	50	40	33	30	25	20	17	15
	2GN□K	0.12	0.14	0.19	0.23	0.29	0.35	0.39	0.48	0.58	0.70	0.70	0.87	1.04	1.25	1.39	1.74	1.88	2.35	2.82	3.00	3.00	3.00	3.00	3.00
		1.14	1.36	1.90	2.27	2.84	3.41	3.79	4.74	5.69	6.82	6.82	8.53	10.23	12.28	13.65	17.1	18.4	23.0	27.6	30.0	30.0	30.0	30.0	30.0

■ 容许悬挂负载·容许轴向负载 To Allow The Hoisting Of The Load Allow Axial Load

电动机 (圆轴型) →P215页 Motor (Round shaft) →P215
减速机→215页 Gearhead→P215

■ 减速机的容许负载惯性惯量 J Permissible Load Inertia J For Gearhead

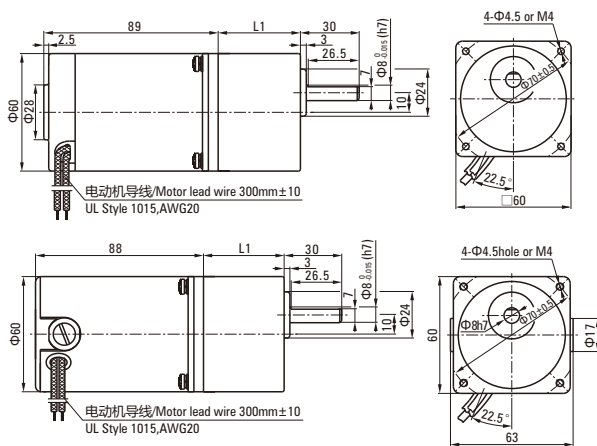
→215页→P215

■ 外形图 (单位 mm) Dimensions (Unit mm)

减速器附有安装用螺丝 Mounting screws are included with gearhead.

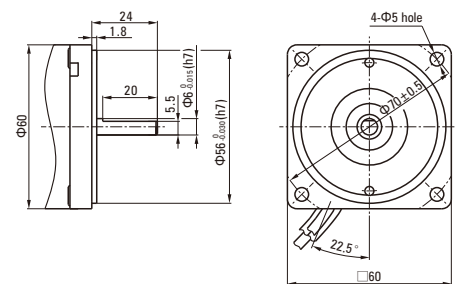
● 导线型 Lead Wiring Type

重量 Weight : 电动机 Motor : 0.9kg 减速器 Gearhead : 0.4kg



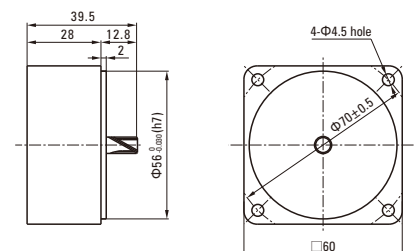
● 圆轴型的转轴部分 Shaft Section Of Round Shaft Type

除重量及轴部外电动机外形与齿轮轴型相同。
Excluding weight and the shaft section motor shape are the same as those of the pinion shaft type.



● 中间减速器 Decimal Gearhead

可安装在GN齿轮轴型上 Can be connected to GN pinion shaft type
电动机外形与齿轮轴型相同
2GN10X
重量 Weight : 0.24kg

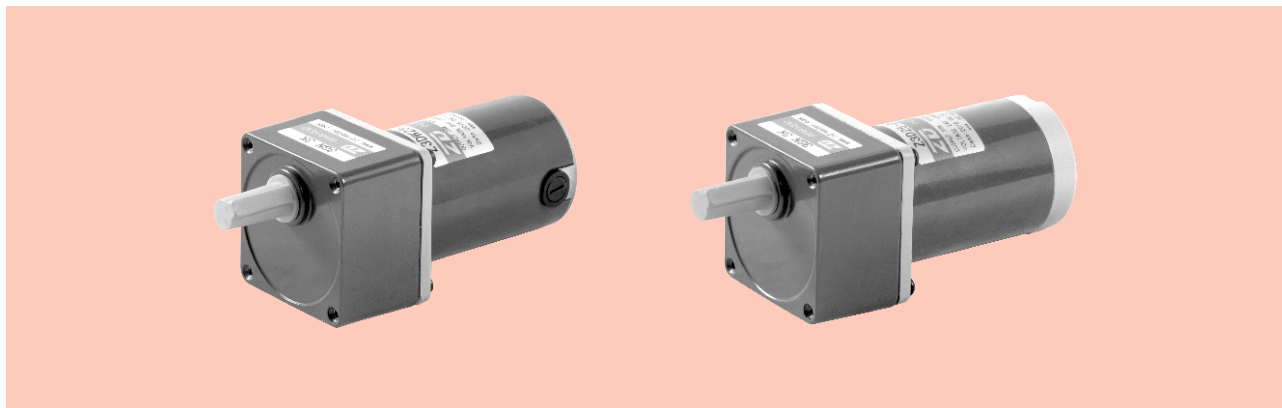


电动机型号 Motor Model	减速器型号 Gearhead Model	减速比 Gear Ratio	L1
Z2D15-12GN Z2DW15-12GN Z2D15-24GN Z2DW15-24GN Z2D15-90GN Z2DW15-90GN	2GN□K	3~200	41

- 减速器型号的□中为减速比的数值 Enter the gear ratio in the box (□) within the model name
- 减速比3~18可以做成短箱体 (L1=32) Gear ratio 3~18, short case is possible (L1=32)

直流电动机 DC MOTORS

■ 25W □ 70mm



电机性能参数 Motor Performance Parameters

型号 Model	电压 Voltage V	功率 Power W	空载参数No-load Parameters		负载参数Load Parameters			电刷寿命 Brush Life H	电机重量 Motor Weight kg
			转速Speed r/min	电流Current A	转速Speed r/min	力矩Torque mN.m	电流Current A		
Z3D25-12 □	12	25	3300	1.0Max.	3000	80	3.5	2000	1.0
Z3DW25-12□	12	25	3300	1.0Max.	3000	80	3.5	2000	1.0
Z3D25-24 □	24	25	3200	0.5Max.	2800	85	1.6	2000	1.0
Z3DW25-24□	24	25	3200	0.5Max.	2800	85	1.6	2000	1.0
Z3D25-90 □	90	25	3100	0.3Max.	2700	88	0.6	2000	1.0
Z3DW25-90□	90	25	3100	0.3Max.	2700	88	0.6	2000	1.0

- 电机电压、功率及转速可在配件尺寸等条件允许下根据客户要求定制。
Motor voltage, power and speed will be customized according to his requestment under the allowed circumstance of adoptable dimension.
- D后如加W即Z2DW06-12GN表示外置电刷齿轴电机，如无W则为标准内置电刷齿轴电机：外置电刷电机，用户可自行在外部更换电刷；内置电刷电机更换电刷时需将电机拆装后方可更换。
We use W after D in the model to express the external brush motor, such as Z2DW06-12GN. If no W, it means the standard internal brush motor. For external brush motor, you can replce the brush directly. For internal ones, we need to disassembly the motor first.

种类 Type

电动机 Motor

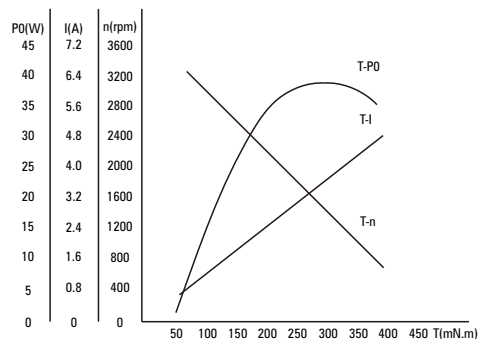
机型 Type	型号Model	
	齿轮轴型 Pinion Shaft	圆轴型 Round Shaft
导线型 Lead Wire Type	Z3D25-12GN	Z3D25-12A
	Z3DW25-12GN	Z3DW25-12A
	Z3D25-24GN	Z3D25-24A
	Z3DW25-24GN	Z3D25-24A
	Z3D25-90GN	Z3D25-90A
	Z3DW25-90GN	Z3DW25-90A

平行轴减速器（另售） Parallel Shaft Gearhead (Sold Separately)

减速器种类 Gearhead Type	减速器型号 Gearhead Model	减速比 Gear Ratio
长寿命•低噪音 Long Life • Low Noise	3GN□K	3、3.6、5、6、7.5、9、10、 12.5、15、18、20、25、30、 36、40、50、60、75、90、 100、120、150、180、200
	3GN10XK (中间减速器 Decimal Gearhead)	

- 减速器型号的□中为减速比的数值
Enter the gear ratio in the box (□) within the model name

电机特性曲线 Characteristic Curve Of Motor



电机接线图 Wiring Diagram Of Motor



- 标准引出线长度: 300mm±10, 型号: UL1015, 规格: AWG20; 电机引出线长度、型号在配件尺寸等条件允许的情况下可根据客户要求定制。
Stanclard length of lead wire: 300mm±10, model: UL1015, type: AWG20; lead wire length, model will be customerised by dient requestmant under allowed circumstance of adoptable dimension.

■ 装有减速器时的容许转矩 Gear Motor-Torque Table

- 减速器另售·中间减速器另售。
Gearheads are sold separately. Decimal gearheads are not available.
- 减速品型号的□中为减速比的数值。
Enter the gear ratio in the box (□) within the model name.
- □色表示与电动机同一方向运转，其他则为相反方向。
The colored background □ indicates the same rotating direction of the motor while the rotating direction of others are opposite.
- 转速是以电动机的额定转速为基准除以减速比而算出来的数值。实际转速将随负载大小变化而比所示数值减少2%~20%左右。
The speed is calculated by dividing the motor's synchronous speed by the gear ratio. The actual speed is 2%~20% less than the displayed value, depending on the size of the load.
- 希望以大于下表的减速比进行进一步减速时，可在电动机与减速机之间安装减速比为10的中间减速机。
这时的容许转矩为5N·m。
To reduce the speed beyond the gear ratio in the table, attach a decimal gearhead (gear ratio:10) between the gearhead and motor. In that case, the permissible torque is 5N·m.

■ 容许力矩单位 Allowance Torque Unit : 上段 Upside (N.m) /下段 Belowside (kgf.cm)

型号 Type	减速比 Gear Ratio	3	3.6	5	6	7.5	9	10	12.5	15	18	20	25	30	36	40	50	60	75	90	100	120	150	180	200
Z3D25-24GN	转速 Speed r/min	933	778	560	467	373	311	280	224	187	156	140	112	93	78	70	56	47	37	31	28	23	19	16	14
	3GN□K	0.21	0.25	0.35	0.41	0.52	0.62	0.69	0.86	1.04	1.24	1.24	1.55	1.86	2.24	2.49	3.11	3.73	4.66	5.00	5.00	5.00	5.00	5.00	5.00
		2.03	2.44	3.38	4.06	5.08	6.09	6.77	8.46	10.2	12.2	12.2	15.2	18.3	21.9	24.4	30.5	36.6	45.7	50.0	50.0	50.0	50.0	50.0	50.0

■ 容许悬挂负载·容许轴向负载 To Allow The Hoisting Of The Load Allow Axial Load

电动机 (圆轴型) →P215 Motor (Round shaft) →P215
 减速机→P215 Gearhead→P215

■ 减速机的容许负载惯性惯量 J Permissible Load Inertia J For Gearhead

→P215页→P215

● 键·键槽 (减速器附件)

Key·Keyway (The Key Is Included With The Gearhead)

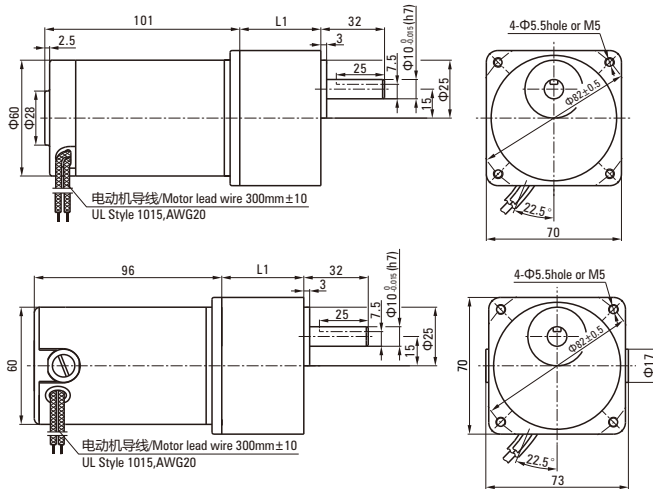


■ 外形图 (单位 mm) Dimensions (Unit mm)

减速器附有安装用螺丝 Mounting screws are included with gearhead.

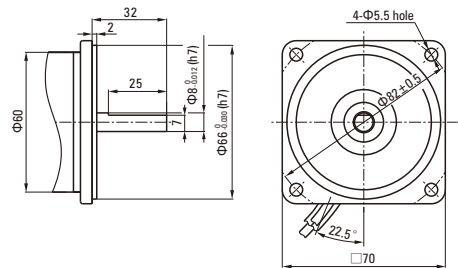
● 导线型 Lead Wiring Type

重量 Weight : 电动机 Motor : 1.0kg 减速器 Gearhead : 0.55kg



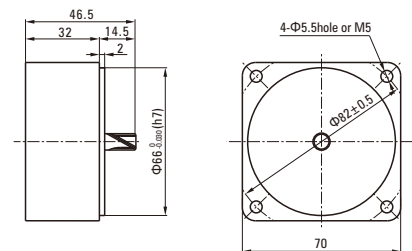
● 圆轴型的转轴部分 Shaft Section Of Round Shaft Type

除重量及轴部外电动机外形与齿轮轴型相同。
 Excluding weight and the shaft section motor shape are the same as those of the pinion shaft type.



● 中间减速器 Decimal Gearhead

可安装在GN齿轮轴型上 Can be connected to GN pinion shaft type
 电动机外形与齿轮轴型相同
 3GN10X
 重量 Weight : 0.31kg

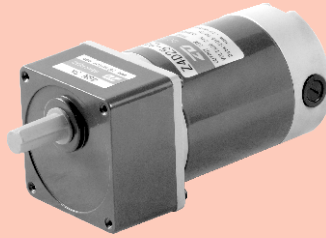


电动机型号 Motor Model	减速器型号 Gearhead Model	减速比 Gear Ratio	L1
Z3D25-12GN Z3DW25-12GN Z3D25-24GN Z3DW25-24GN Z3D25-90GN Z3DW25-90GN	3GN□K	3~200	42

- 减速器型号的□中为减速比的数值 Enter the gear ratio in the box (□) within the model name
- 减速比3~18可以做成短箱体 (L1=32) Gear ratio 3~18, short case is possible (L1=32)

直流电动机 DC MOTORS

■ 25W □ 80mm



电机性能参数 Motor Performance Parameters

型号 Model	电压 Voltage V	功率 Power W	空载参数No-load Parameters		负载参数Load Parameters			电刷寿命 Brush Life H	电机重量 Motor Weight kg
			转速Speed	电流Current	转速Speed	力矩Torque	电流Current		
			r/min	A	r/min	mN.m	A		
Z4D25-12□	12	25	3200	1.4Max.	3100	77	3.6	2000	1.7
Z4D25-24□	24	25	3000	0.7Max.	2850	84	1.7	2000	1.7
Z4D25-90□	90	25	3200	0.2Max.	3000	80	0.5	2000	1.7

● 电机电压、功率及转速可在配件尺寸等条件下根据客户要求定制。

Motor voltage, power and speed will be customized according to his requestment under the allowed circumstance of adoptable dimension.

种类 Type

● 电动机 Motor

机型 Type	型号Model	
	齿轮轴型 Pinion Shaft	圆轴型 Round Shaft
导线型 Lead Wire Type	Z4D25-12GN	Z4D25-12A
	Z4D25-24GN	Z4D25-24A
	Z4D25-90GN	Z4D25-90A

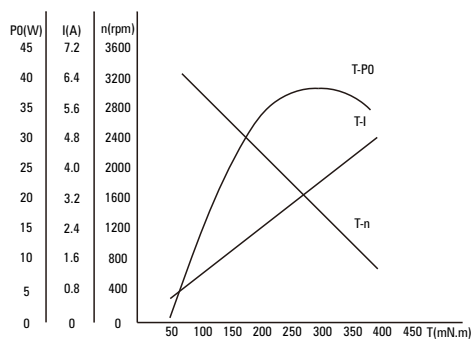
● 平行轴减速器 (另售) Parallel Shaft Gearhead (Sold Separately)

减速器种类 Gearhead Type	减速器型号 Gearhead Model	减速比 Gear Ratio
长寿命●低噪音 Long Life ● Low Noise	4GN□K	3、3.6、5、6、7.5、9、10、12.5、15、18、20、25、30、36、40、50、60、75、90、100、120、150、180、200
	4GN10XK (中间减速器 Decimal Gearhead)	

● 减速器型号的□中为减速比的数值

Enter the gear ratio in the box (□) within the model name

● 电机特性曲线 Characteristic Curve Of Motor



● 电机接线图 Wiring Diagram Of Motor



● 标准引出线长度: 300mm±10, 型号: UL1015, 规格: AWG20; 电机引出线长度、型号在配件尺寸等条件下可根据客户要求定制。

Standard length of lead wire: 300mm±10, model: UL1015, type: AWG20; lead wire length, model will be customerised by dient requestmant under allowed circumstance of adoptable dimension.

■ 装有减速器时的容许转矩 Gear Motor-Torque Table

- 减速器另售·中间减速器另售。
Gearheads are sold separately. Decimal gearheads are not available.
- 减速品型号的□中为减速比的数值。
Enter the gear ratio in the box (□) within the model name.
- □色表示与电动机同一方向运转，其他则为相反方向。
The colored background □ indicates the same rotating direction of the motor while the rotating direction of others are opposite.
- 转速是以电动机的额定转速为基准除以减速比而算出来的数值。实际转速将随负载大小变化而比所示数值减少2%~20%左右。
The speed is calculated by dividing the motor's synchronous speed by the gear ratio. The actual speed is 2%~20% less than the displayed value, depending on the size of the load.
- 希望以大于下表的减速比进行进一步减速时，可在电动机与减速机之间安装减速比为10的中间减速机。
这时的容许转矩为8N·m。
To reduce the speed beyond the gear ratio in the table, attach a decimal gearhead (gear ratio:10) between the gearhead and motor. In that case, the permissible torque is 8N·m.

■ 容许力矩单位 Allowance Torque Unit : 上段 Upside (N.m) /下段 Belowside (kgf.cm)

型号 Type	减速比 Gear Ratio	3	3.6	5	6	7.5	9	10	12.5	15	18	20	25	30	36	40	50	60	75	90	100	120	150	180	200
Z4D25-24GN	转速 Speed r/min	950	792	570	475	380	317	285	228	190	158	143	114	95	79	71	57	48	38	32	29	24	19	16	14
	4GN□K	0.20	0.24	0.34	0.41	0.51	0.61	0.68	0.85	1.02	1.22	1.36	1.53	1.83	2.20	2.44	3.05	3.30	4.12	4.95	5.50	6.60	8.00	8.00	8.00
		1.99	2.39	3.32	3.99	4.99	5.98	6.65	8.31	10.0	12.0	13.3	15.0	18.0	21.5	23.9	29.9	32.3	40.4	48.5	53.9	64.6	80.0	80.0	80.0

■ 容许悬挂负载·容许轴向负载 To Allow The Hoisting Of The Load Allow Axial Load

电动机 (圆轴型) →P215页 Motor (Round shaft) →P215
减速机 →P215页 Gearhead →P215

■ 减速机的容许负载惯性惯量 J Permissible Load Inertia J For Gearhead

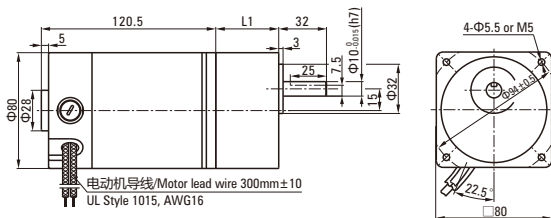
→P215页 →P215

■ 外形图 (单位 mm) Dimensions (Unit mm)

减速器附有安装用螺丝 Mounting screws are included with gearhead.

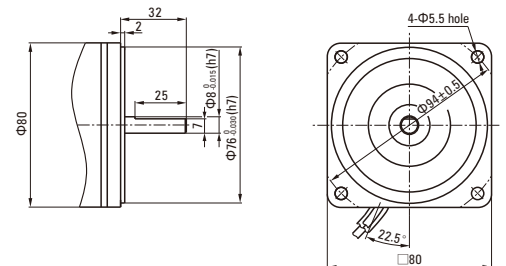
● 导线型 Lead Wiring Type

重量 Weight : 电动机 Motor : 1.7kg 减速器 Gearhead : 0.80kg



● 圆轴型的转轴部分 Shaft Section of Round Shaft Type

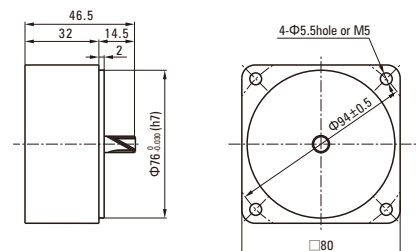
除重量及轴部外电动机外形与齿轮轴型相同。
Excluding weight and the shaft section motor shape are the same as those of the pinion shaft type.



电动机型号 Motor Model	减速器型号 Gearhead Model	减速比 Gear Ratio	L1
Z4D25-12GN Z4D25-24GN Z4D25-90GN	4GN□K	3~200	42.5

● 中间减速器 Decimal gearhead

可安装在GN齿轮轴型上 Can be connected to GN pinion shaft type
电动机外形与齿轮轴型相同
4GN10X
重量 Weight : 0.41kg



- 减速器型号的□中为减速比的数值
Enter the gear ratio in the box (□) within the model name
- 减速比3~18可以做短箱体 (L1=32)
Gear ratio 3~18, short case is possible (L1=32)

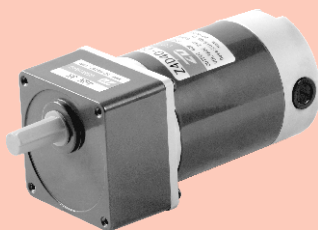
● 键·键槽 (减速器附件)

Key·Keyway (The Key Is Included With The Gearhead)



直流电动机 DC MOTORS

■ 40W □ 80mm



电机性能参数 Motor Performance Parameters

型号 Model	电压 Voltage V	功率 Power W	空载参数No-load Parameters		负载参数Load Parameters			电刷寿命 Brush Life H	电机重量 Motor Weight kg
			转速Speed	电流Current	转速Speed	力矩Torque	电流Current		
			r/min	A	r/min	mN.m	A		
Z4D40-12□	12	40	3100	2.0Max.	2800	136	5.2	2000	1.8
Z4D40-24□	24	40	3100	0.8Max.	3000	127	2.1	2000	1.8
Z4D40-90□	90	40	3200	0.3Max.	3000	127	0.7	2000	1.8

● 电机电压、功率及转速可在配件尺寸等条件下根据客户要求定制。

Motor voltage, power and speed will be customized according to his requestment under the allowed circumstance of adoptable dimension.

种类 Type

● 电动机 Motor

机型 Type	型号Model	
	齿轮轴型 Pinion Shaft	圆轴型 Round Shaft
导线型 Lead Wire Type	Z4D40-12GN	Z4D40-12A
	Z4D40-24GN	Z4D40-24A
	Z4D40-90GN	Z4D40-90A

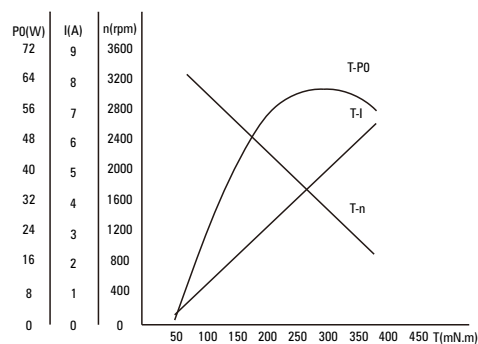
● 平行轴减速器 (另售) Parallel Shaft Gearhead (Sold Separately)

减速器种类 Gearhead Type	减速器型号 Gearhead Model	减速比 Gear Ratio
长寿命●低噪音 Long Life ● Low Noise	4GN□K	3、3.6、5、6、7.5、9、10、 12.5、15、18、20、25、30、 36、40、50、60、75、90、 100、120、150、180、200
	4GN10XK (中间减速器 Decimal Gearhead)	

● 减速器型号的□中为减速比的数值

Enter the gear ratio in the box (□) within the model name

● 电机特性曲线 Characteristic Curve Of Motor



● 电机接线图 Wiring Diagram Of Motor



● 标准引出线长度: 300mm±10, 型号: UL1015, 规格: AWG16; 电机引出线长度、型号在配件尺寸等条件下可根据客户要求定制。

Standard length of lead wire: 300mm±10, model: UL1015, type: AWG16; lead wire length, model will be customerised by dient requestmant under allowed circumstance of adoptable dimension.

■ 装有减速器时的容许转矩 Gear Motor-Torque Table

- 减速器另售·中间减速器另售。
Gearheads are sold separately. Decimal gearheads are not available.
- 减速品型号的□中为减速比的数值。
Enter the gear ratio in the box (□) within the model name.
- □色表示与电动机同一方向运转，其他则为相反方向。
The colored background □ indicates the same rotating direction of the motor while the rotating direction of others are opposite.
- 转速是以电动机的额定转速为基准除以减速比而算出来的数值。实际转速将随负载大小变化而比所示数值减少2%~20%左右。
The speed is calculated by dividing the motor's synchronous speed by the gear ratio. The actual speed is 2%~20% less than the displayed value, depending on the size of the load.
- 希望以大于下表的减速比进行进一步减速时，可在电动机与减速机之间安装减速比为10的中间减速机。
这时的容许转矩为8N·m。
To reduce the speed beyond the gear ratio in the table, attach a decimal gearhead (gear ratio:10) between the gearhead and motor. In that case, the permissible torque is 8N·m.

■ 容许力矩单位 Allowance Torque Unit : 上段 Upside (N.m) /下段 Belowside (kgf.cm)

型号 Type	减速比 Gear Ratio	3	3.6	5	6	7.5	9	10	12.5	15	18	20	25	30	36	40	50	60	75	90	100	120	150	180	200
Z4D40-24GN	转速 Speed r/min	1000	833	600	500	400	333	300	240	200	167	150	120	100	83	75	60	50	40	33	30	25	20	17	15
	4GN□K	0.31	0.37	0.52	0.62	0.77	0.93	1.03	1.29	1.55	1.86	2.06	2.32	2.78	3.34	3.71	4.64	5.01	6.27	7.52	8.00	8.00	8.00	8.00	8.00
		3.03	3.64	5.05	6.06	7.58	9.10	10.1	12.6	15.2	18.2	20.2	22.7	27.3	32.7	36.4	45.5	49.1	61.4	73.7	80.0	80.0	80.0	80.0	80.0

■ 容许悬挂负载·容许轴向负载 To Allow The Hoisting Of The Load Allow Axial Load

电动机 (圆轴型) →P215页

Motor (Round shaft) →P215

减速机→P215页

Gearhead→P215

■ 减速机的容许负载惯性惯量 J Permissible Load Inertia J For Gearhead

→P215页→P215

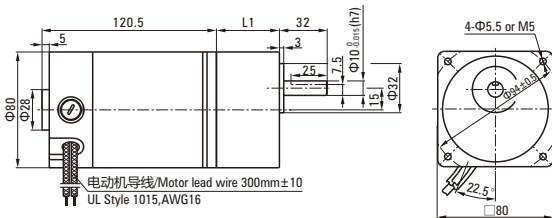
■ 外形图 (单位 mm) Dimensions (Unit mm)

减速器附有安装用螺丝 Mounting screws are included with gearhead.

● 导线型 Lead Wiring Type

重量 Weight : 电动机 Motor : 1.8kg

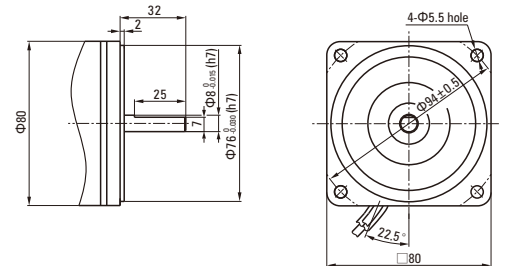
减速器 Gearhead : 0.80kg



● 圆轴型的转轴部分 Shaft Section of Round Shaft Type

除重量及轴部外电动机外形与齿轮轴型相同。

Excluding weight and the shaft section motor shape are the same as those of the pinion shaft type.



电动机型号 Motor Model	减速器型号 Gearhead Model	减速比 Gear Ratio	L1
Z4D40-12GN Z4D40-24GN Z4D40-90GN	4GN□K	3~200	42.5

- 减速器型号的□中为减速比的数值
Enter the gear ratio in the box (□) within the model name
- 减速比3~18可以做成短箱体 (L1=32)
Gear ratio 3~18, short case is possible (L1=32)

● 键·键槽 (减速器附件)

Key·Keyway (The Key Is Included With The Gearhead)

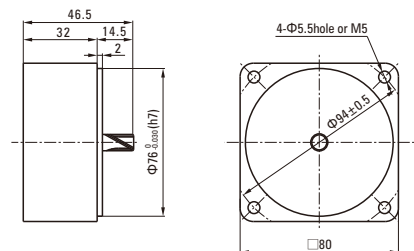


● 中间减速器 Decimal Gearhead

可安装在GN齿轮轴型上 Can be connected to GN pinion shaft type
电动机外形与齿轮轴型相同

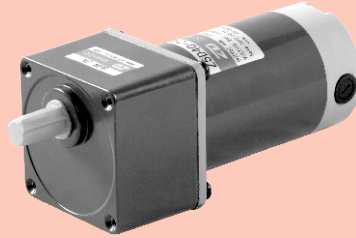
4GN10X

重量 Weight : 0.41kg



直流电动机 DC MOTORS

■ 40W □ 90mm



电机性能参数 Motor Performance Parameters

型号 Model	电压 Voltage V	功率 Power W	空载参数No-load Parameters		负载参数Load Parameters			电刷寿命 Brush Life H	电机重量 Motor Weight kg
			转速Speed r/min	电流Current A	转速Speed r/min	力矩Torque mN.m	电流Current A		
Z5D40-12□	12	40	3100	2.0Max.	2800	136	5.2	2000	1.9
Z5D40-24□	24	40	3000	1.0Max.	2800	136	2.6	2000	1.9
Z5D40-90□	90	40	3200	0.3Max.	3000	127	0.7	2000	1.9

● 电机电压、功率及转速可在配件尺寸等条件允许下根据客户要求定制。

Motor voltage, power and speed will be customized according to his requestment under the allowed circumstance of adoptable dimension.

种类 Type

● 电动机 Motor

机型 Type	型号Model		
	齿轮轴型 Pinion Shaft	圆轴型 Round Shaft	圆轴型 Round Shaft
导线型 Lead Wire Type	Z5D40-12GN	Z5D40-12A	Z5D40-12A1
	Z5D40-24GN	Z5D40-24A	Z5D40-24A1
	Z5D40-90GN	Z5D40-90A	Z5D40-90A1

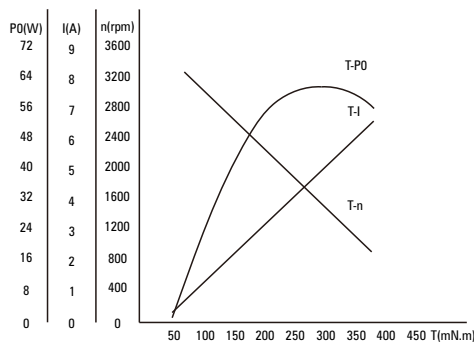
● 平行轴减速器 (另售) Parallel Shaft Gearhead (Sold Separately)

减速器种类 Gearhead Type	减速器型号 Gearhead Model	减速比 Gear Ratio
长寿命●低噪音 Long Life ● Low Noise	5GN□K	3、3.6、5、6、7.5、9、10、 12.5、15、18、20、25、30、 36、40、50、60、75、90、 100、120、150、180、200
	5GN10XK (中间减速器 Decimal Gearhead)	

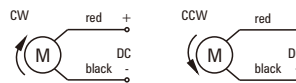
● 减速器型号的□中为减速比的数值

Enter the gear ratio in the box (□) within the model name

● 电机特性曲线 Characteristic Curve Of Motor



● 电机接线图 Wiring Diagram Of Motor



● 标准引出线长度: 300mm±10, 型号: UL1015, 规格: AWG16; 电机引出线长度、型号在配件尺寸等条件允许的情况下可根据客户要求定制。

Standard length of lead wire: 300mm±10, model: UL1015, type: AWG16; lead wire length, model will be customerised by dient requestmant under allowed circumstance of adoptable dimension.

■ 装有减速器时的容许转矩 Gear Motor-Torque Table

- 减速器另售·中间减速器另售。
Gearheads are sold separately. Decimal gearheads are not available.
- 减速品型号的□中为减速比的数值。
Enter the gear ratio in the box (□) within the model name.
- □色表示与电动机同一方向运转，其他则为相反方向。
The colored background □ indicates the same rotating direction of the motor while the rotating direction of others are opposite.
- 转速是以电动机的额定转速为基准除以减速比而算出来的数值。实际转速将随负载大小变化而比所示数值减少2%~20%左右。
The speed is calculated by dividing the motor's synchronous speed by the gear ratio. The actual speed is 2%~20% less than the displayed value, depending on the size of the load.
- 希望以大于下表的减速比进行进一步减速时，可在电动机与减速机之间安装减速比为10的中间减速机。
这时容许转矩为10N·m。
To reduce the speed beyond the gear ratio in the table, attach a decimal gearhead (gear ratio:10) between the gearhead and motor. In that case, the permissible torque is 10N·m.

■ 容许力矩单位 Allowance Torque Unit : 上段 Upside (N.m) /下段 Belowside (kgf.cm)

型号 Type	减速比 Gear Ratio	3	3.6	5	6	7.5	9	10	12.5	15	18	20	25	30	36	40	50	60	75	90	100	120	150	180	200
Z5D40-24GN	转速 Speed r/min	933	778	560	467	373	311	280	224	187	156	140	112	93	78	70	56	47	37	31	28	23	19	16	14
	5GN□K	0.33	0.40	0.55	0.66	0.83	0.99	1.11	1.38	1.66	1.79	1.99	2.49	2.98	3.58	3.58	4.48	5.37	6.71	8.06	8.95	10.0	10.0	10.0	10.0
		3.25	3.90	5.41	6.50	8.12	9.75	10.8	13.5	16.2	17.5	19.5	24.4	29.2	35.1	35.1	43.9	52.6	65.8	78.9	87.7	100	100	100	100

■ 容许悬挂负载·容许轴向负载 To Allow The Hoisting Of The Load Allow Axial Load

电动机 (圆轴型) → P215页

Motor (Round shaft) → P215

减速机 → P215页

Gearhead → P215

■ 减速机的容许负载惯性惯量 J Permissible Load Inertia J For Gearhead

→ P215页 → P215

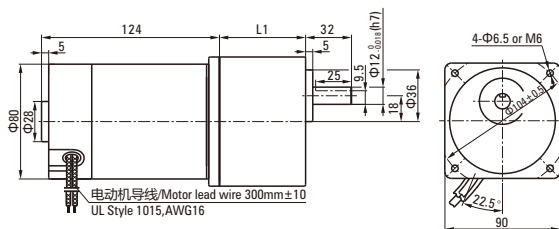
■ 外形图 (单位 mm) Dimensions (Unit mm)

减速机附有安装用螺丝 Mounting screws are included with gearhead.

● 导线型 Lead Wiring Type

重量 Weight : 电动机 Motor : 1.9kg

减速机 Gearhead : 1.35kg



电动机型号 Motor Model	减速机型号 Gearhead Model	减速比 Gear Ratio	L1
Z5D40-12GN Z5D40-24GN Z5D40-90GN	5GN□K	3~200	42.5

- 减速机型号的□中为减速比的数值
Enter the gear ratio in the box (□) within the model name
- 减速比3~18可以做成短箱体 (L1=32)
Gear ratio 3~18, short case is possible (L1=32)

● 键·键槽 (减速机附件)

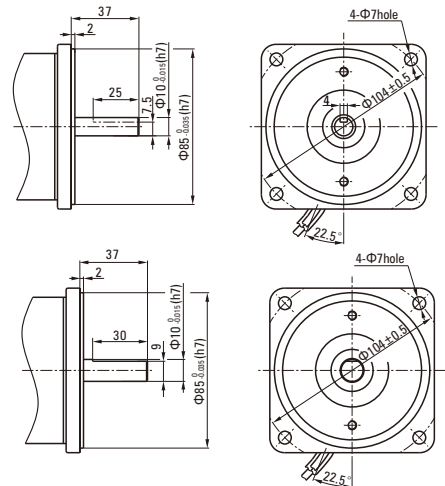
Key·Keyway (The Key Is Included With The Gearhead)



● 圆轴型的转轴部分 Shaft Section Of Round Shaft Type

除重量及轴部外电动机外形与齿轮轴型相同。

Excluding weight and the shaft section motor shape are the same as those of the pinion shaft type.

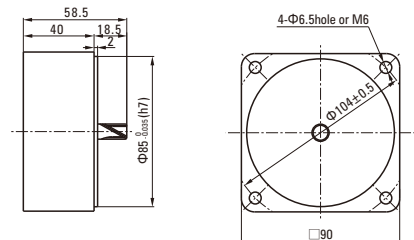


● 中间减速器 Decimal Gearhead

可安装在GN齿轮轴型上 Can be connected to GN pinion shaft type
电动机外形与齿轮轴型相同

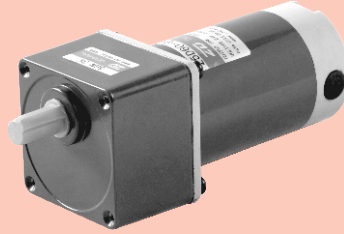
5GN10X

重量 Weight : 0.41kg



直流电动机 DC MOTORS

60W □ 90mm



电机性能参数 Motor Performance Parameters

型号 Model	电压 Voltage V	功率 Power W	空载参数No-load Parameters		负载参数Load Parameters			电刷寿命 Brush Life H	电机重量 Motor Weight kg
			转速Speed	电流Current	转速Speed	力矩Torque	电流Current		
			r/min	A	r/min	mN.m	A		
Z5D60-12□	12	60	3000	2.0Max.	2600	220	9.0	2000	2.2
Z5D60-24□	24	60	3100	1.0Max.	2800	205	3.8	2000	2.2
Z5D60-90□	90	60	3100	0.3Max.	2900	198	1.0	2000	2.2

- 电机电压、功率及转速可在配件尺寸等条件允许下根据客户要求定制。
Motor voltage, power and speed will be customized according to his requestment under the allowed circumstance of adoptable dimension.

种类 Type

电动机 Motor

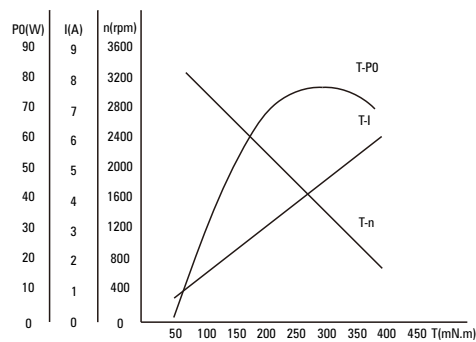
机型 Type	型号Model		
	齿轮轴型 Pinion Shaft	圆轴型 Round Shaft	圆轴型 Round Shaft
导线型 Lead Wire Type	Z5D60-12GU	Z5D60-12A	Z5D60-12A1
	Z5D60-24GU	Z5D60-24A	Z5D60-24A1
	Z5D60-90GU	Z5D60-90A	Z5D60-90A1

平行轴减速器 (另售) Parallel Shaft Gearhead (Sold Separately)

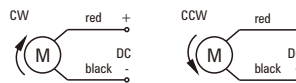
减速器种类 Gearhead Type	减速器型号 Gearhead Model	减速比 Gear Ratio
长寿命•低噪音 Long Life • Low Noise	5GU□KB	3、3.6、5、6、7.5、9、10、12.5、15、18、20、25、30、36、40、50、60、75、90、100、120、150、180、200
	5GU10XK (中间减速器 Decimal Gearhead)	

- 减速器型号的□中为减速比的数值
Enter the gear ratio in the box (□) within the model name

电机特性曲线 Characteristic Curve Of Motor



电机接线图 Wiring Diagram Of Motor



- 标准引出线长度: 300mm±10, 型号: UL1015, 规格: AWG16; 电机引出线长度、型号在配件尺寸等条件允许的情况下可根据客户要求定制。
Standard length of lead wire: 300mm±10, model: UL1015, type: AWG16; lead wire length, model will be customerised by dient requestmant under allowed circumstance of adoptable dimension.

■ 装有减速器时的容许转矩 Gear Motor-Torque Table

- 减速器另售·中间减速器另售。
Gearheads are sold separately. Decimal gearheads are not available.
- 减速品型号的□中为减速比的数值。
Enter the gear ratio in the box (□) within the model name.
- □色表示与电动机同一方向运转，其他则为相反方向。
The colored background □ indicates the same rotating direction of the motor while the rotating direction of others are opposite.
- 转速是以电动机的额定转速为基准除以减速比而算出来的数值。实际转速将随负载大小变化而比所示数值减少2%~20%左右。
The speed is calculated by dividing the motor's synchronous speed by the gear ratio. The actual speed is 2%~20% less than the displayed value, depending on the size of the load.
- 希望以大于下表的减速比进行进一步减速时，可在电动机与减速机之间安装减速比为10的中间减速机。
这时的容许转矩为20N·m。
To reduce the speed beyond the gear ratio in the table, attach a decimal gearhead (gear ratio:10) between the gearhead and motor. In that case, the permissible torque is 20N·m.

■ 容许力矩单位 Allowance Torque Unit : 上段 Upside (N.m) /下段 Belowside (kgf.cm)

型号 Type	减速比 Gear Ratio	3	3.6	5	6	7.5	9	10	12.5	15	18	20	25	30	36	40	50	60	75	90	100	120	150	180	200
Z5D60-24GU	转速 Speed r/min	933	778	560	467	373	311	280	224	187	156	140	112	93	78	70	56	47	37	31	28	23	19	16	14
	5GU□KB	0.50 4.87	0.60 5.85	0.83 8.12	0.99 9.75	1.24 12.2	1.49 14.6	1.49 14.6	1.86 18.3	2.24 21.9	2.69 26.3	2.69 26.3	3.36 32.9	4.03 39.5	4.83 47.4	5.37 52.6	6.71 65.8	8.06 78.9	10.1 98.7	10.9 107	12.1 118	14.5 142	18.1 178	20.0 200	20.0 200

■ 容许悬挂负载·容许轴向负载 To Allow The Hoisting Of The Load Allow Axial Load

电动机 (圆轴型) →P215页

Motor (Round shaft) →P215

减速机→P215页

Gearhead→P215

■ 减速机的容许负载惯性惯量 J Permissible Load Inertia J For Gearhead

→P215页→P215

● 圆轴型的转轴部分 Shaft Section Of Round Shaft Type

除重量及轴部外电动机外形与齿轮轴型相同。
Excluding weight and the shaft section motor shape are the same as those of the pinion shaft type.

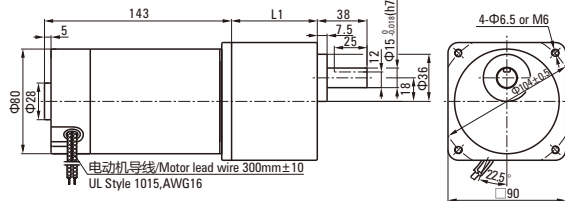
■ 外形图 (单位 mm) Dimensions (Unit mm)

减速机附有安装用螺丝 Mounting screws are included with gearhead.

● 导线型 Lead Wiring Type

重量 Weight : 电动机 Motor : 2.2kg

减速机 Gearhead : 1.5kg



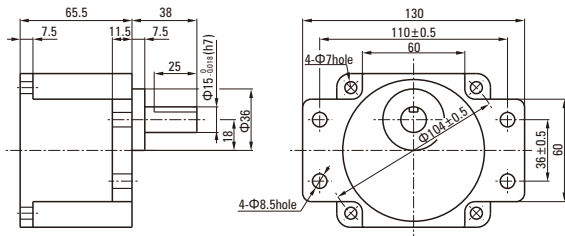
电动机型号 Motor Model	减速机型号 Gearhead Model	减速比 Gear Ratio	L1
Z5D60-12GU Z5D60-24GU Z5D60-90GU	5GU□KB	3~200	65.5

● 减速机型号的□中为减速比的数值Enter the gear ratio in the box (□) within the model name

● 凸缘安装型减速机 Flange Mounting Reducer

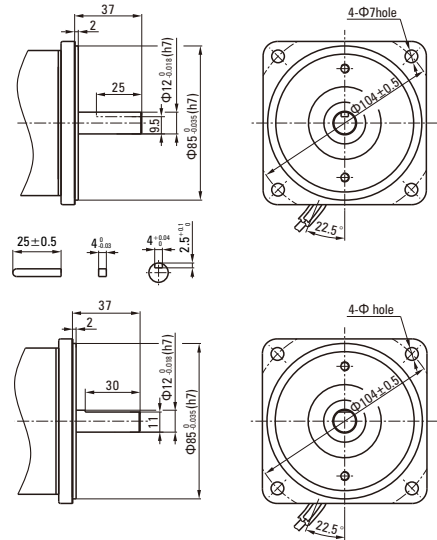
可安装在GU齿轮轴型上Can be mounted on GU type gear shaft 5GU□K

重量 Weight:1.5kg



● 键·键槽 (减速机附件)

Key·Keyway (The Key Is Included With The Gearhead)



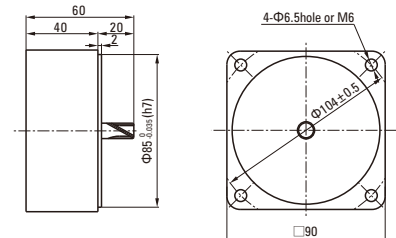
● 中间减速机 Decimal Gearhead

可安装在GU齿轮轴型上Can be connected to GU pinion shaft type

电动机外形与齿轮轴型相同

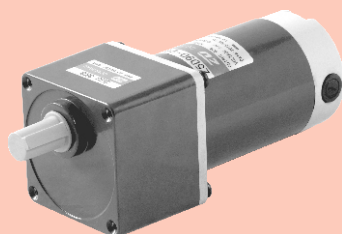
5GU10X

重量 Weight : 0.651kg



直流电动机 DC MOTORS

90W □ 90mm



电机性能参数 Motor Performance Parameters

型号 Model	电压 Voltage V	功率 Power W	空载参数No-load Parameters		负载参数Load Parameters			电刷寿命 Brush Life H	电机重量 Motor Weight kg
			转速Speed	电流Current	转速Speed	力矩Torque	电流Current		
			r/min	A	r/min	mN.m	A		
Z5D90-12□	12	90	3100	2.0Max.	2600	330	12.0	2000	2.2
Z5D90-24□	24	90	3300	1.0Max.	2800	307	5.00	2000	2.2
Z5D90-90□	90	90	3000	0.3Max.	2900	307	1.40	2000	2.2

●电机电压、功率及转速可在配件尺寸等条件允许下根据客户要求定制。

Motor voltage, power and speed will be customized according to his requestment under the allowed circumstance of adoptable dimension.

种类 Type

● 电动机 Motor

机型 Type	型号Model		
	齿轮轴型 Pinion Shaft	圆轴型 Round Shaft	圆轴型 Round Shaft
导线型 Lead Wire Type	Z5D90-12GN	Z5D90-12A	Z5D90-12A1
	Z5D90-24GN	Z5D90-24A	Z5D90-24A1
	Z5D90-90GN	Z5D90-90A	Z5D90-90A1

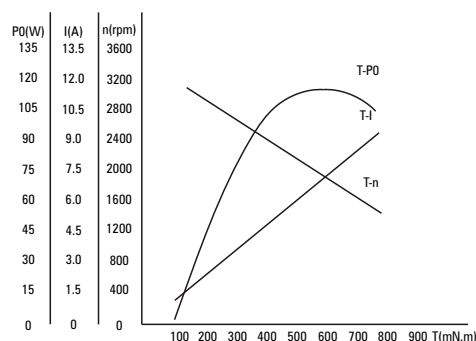
● 平行轴减速器 (另售) Parallel Shaft Gearhead (Sold Separately)

减速器种类 Gearhead Type	减速器型号 Gearhead Model	减速比 Gear Ratio
长寿命●低噪音 Long Life ● Low Noise	5GU□KB	3、3.6、5、6、7.5、9、10、12.5、15、18、20、25、30、36、40、50、60、75、90、100、120、150、180、200
	5GU10XK (中间减速器 Decimal Gearhead)	

●减速器型号的□中为减速比的数值

Enter the gear ratio in the box (□) within the model name

● 电机特性曲线 Characteristic Curve Of Motor



● 电机接线图 Wiring Diagram Of Motor



●标准引出线长度: 300mm±10, 型号: UL1015, 规格: AWG16; 电机引出线长度、型号在配件尺寸等条件允许的情况下可根据客户要求定制。

Stanclard length of lead wire: 300mm±10, model: UL1015, type: AWG16; lead wire length, model will be customerised by dient requestmant under allowed circumstance of adoptable dimension.

■ 装有减速器时的容许转矩 Gear Motor-Torque Table

- 减速器另售·中间减速器另售。
Gearheads are sold separately. Decimal gearheads are not available.
- 减速品型号的□中为减速比的数值。
Enter the gear ratio in the box (□) within the model name.
- □色表示与电动机同一方向运转, 其他则为相反方向。
The colored background □ indicates the same rotating direction of the motor while the rotating direction of others are opposite.
- 转速是以电动机的额定转速为基准除以减速比而算出来的数值。实际转速将随负载大小变化而比所示数值减少2%~20%左右。
The speed is calculated by dividing the motor's synchronous speed by the gear ratio. The actual speed is 2%~20% less than the displayed value, depending on the size of the load.
- 希望以大于下表的减速比进行进一步减速时, 可在电动机与减速机之间安装减速比为10的中间减速器。
这时的容许转矩为20N·m。
To reduce the speed beyond the gear ratio in the table, attach a decimal gearhead (gear ratio:10) between the gearhead and motor. In that case, the permissible torque is 20N·m.

■ 容许力矩单位 Allowance Torque Unit : 上段 Upside (N.m) /下段 Belowside (kgf.cm)

型号 Type	减速比 Gear Ratio	3	3.6	5	6	7.5	9	10	12.5	15	18	20	25	30	36	40	50	60	75	90	100	120	150	180	200
Z5D90-24GU	转速 Speed r/min	933	778	560	467	373	311	280	224	187	156	140	112	93	78	70	56	47	37	31	28	23	19	16	14
	5GU□KB	0.75 7.31	0.90 8.77	1.24 12.2	1.49 14.6	1.86 18.3	2.24 21.9	2.24 21.9	2.80 27.4	3.36 32.9	4.03 39.5	4.03 39.5	5.03 49.3	6.04 59.2	7.25 71.1	8.06 78.9	10.1 98.7	12.4 118	15.1 148	16.3 160	18.1 178	20.0 200	20.0 200	20.0 200	20.0 200

■ 容许悬挂负载·容许轴向负载 To Allow The Hoisting Of The Load Allow Axial Load

电动机 (圆轴型) →P215页 Motor (Round shaft) →P215
减速机→215页 Gearhead→P215

■ 减速机的容许负载惯性惯量 J Permissible Load Inertia J For Gearhead

→215页→P215

● 圆轴型的转轴部分 Shaft Section Of Round Shaft Type

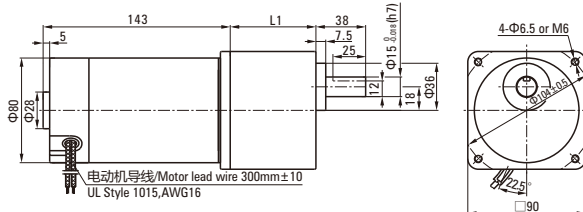
除重量及轴部外电动机外形与齿轮轴型相同。
Excluding weight and the shaft section motor shape are the same as those of the pinion shaft type.

■ 外形图 (单位 mm) Dimensions (Unit mm)

减速器附有安装用螺丝Mounting screws are included with gearhead.

● 导线型 Lead Wiring Type

重量 Weight : 电动机 Motor : 2.2kg 减速器 Gearhead : 1.5kg



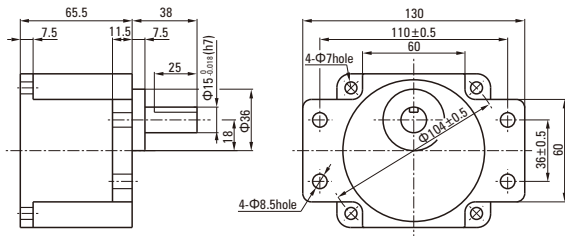
电动机型号 Motor Model	减速器型号 Gearhead Model	减速比 Gear Ratio	L1
Z5D90-12GU Z5D90-24GU Z5D90-90GU	5GU□KB	3~200	65.5

● 减速器型号的□中为减速比的数值 Enter the gear ratio in the box (□) within the model name

● 凸缘安装型减速器 Flange Mounting Reducer

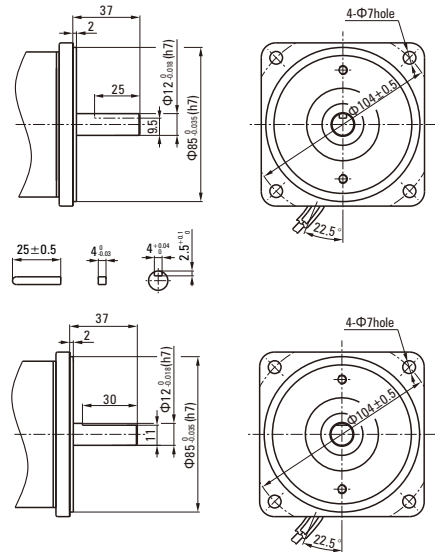
可安装在GU齿轮轴型上 Can be mounted on GU type gear shaft 5GU□K

重量 Weight: 1.5kg



● 键·键槽 (减速器附件)

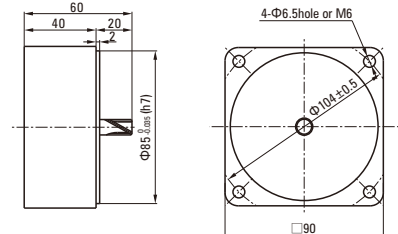
Key·Keyway (The Key Is Included With The Gearhead)



● 中间减速器 Decimal Gearhead

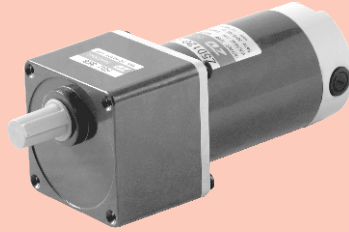
可安装在GU齿轮轴型上 Can be connected to GU pinion shaft type
电动机外形与齿轮轴型相同

5GU10X
重量 Weight : 0.651kg



直流电动机 DC MOTORS

■ 120W □ 90mm



电机性能参数 Motor Performance Parameters

型号 Model	电压 Voltage V	功率 Power W	空载参数No-load Parameters		负载参数Load Parameters			电刷寿命 Brush Life H	电机重量 Motor Weight kg
			转速Speed	电流Current	转速Speed	力矩Torque	电流Current		
			r/min	A	r/min	mN.m	A		
Z5D120-12□	12	120	3100	2.0Max.	2500	458	15.0	2000	2.2
Z5D120-24□	24	120	3200	1.0Max.	2600	441	7.00	2000	2.2
Z5D120-90□	90	120	3000	0.3Max.	2600	441	2.00	2000	2.2

- 电机电压、功率及转速可在配件尺寸等条件允许下根据客户要求定制。
Motor voltage, power and speed will be customized according to his requestment under the allowed circumstance of adoptable dimension.

种类 Type

● 电动机 Motor

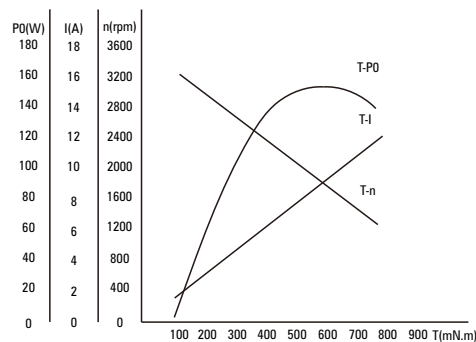
机型 Type	型号Model		
	齿轮轴型 Pinion Shaft	圆轴型 Round Shaft	圆轴型 Round Shaft
导线型 Lead Wire Type	Z5D120-12GN	Z5D120-12A	Z5D120-12A1
	Z5D120-24GN	Z5D120-24A	Z5D120-24A1
	Z5D120-90GN	Z5D120-90A	Z5D120-90A1

● 平行轴减速器 (另售) Parallel Shaft Gearhead (Sold Separately)

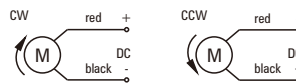
减速器种类 Gearhead Type	减速器型号 Gearhead Model	减速比 Gear Ratio
长寿命●低噪音 Long Life ● Low Noise	5GU□KB	3、3.6、5、6、7.5、9、10、12.5、15、18、20、25、30、36、40、50、60、75、90、100、120、150、180、200
	5GU10XK (中间减速器 Decimal Gearhead)	

- 减速器型号的□中为减速比的数值
Enter the gear ratio in the box (□) within the model name

● 电机特性曲线 Characteristic Curve Of Motor



● 电机接线图 Wiring Diagram Of Motor



- 标准引出线长度: 300mm±10, 型号: UL1015, 规格: AWG16; 电机引出线长度、型号在配件尺寸等条件允许的情况下可根据客户要求定制。
Stanclard length of lead wire: 300mm±10, model: UL1015, type: AWG16; lead wire length, model will be customerised by dient requestmant under allowed circumstance of adoptable dimension.

■ 装有减速器时的容许转矩 Gear Motor-Torque Table

- 减速器另售·中间减速器另售。
Gearheads are sold separately. Decimal gearheads are not available.
- 减速品型号的□中为减速比的数值。
Enter the gear ratio in the box (□) within the model name.
- □色表示与电动机同一方向运转，其他则为相反方向。
The colored background □ indicates the same rotating direction of the motor while the rotating direction of others are opposite.
- 转速是以电动机的额定转速为基准除以减速比而算出来的数值。实际转速将随负载大小变化而比所示数值减少2%~20%左右。
The speed is calculated by dividing the motor's synchronous speed by the gear ratio. The actual speed is 2%~20% less than the displayed value, depending on the size of the load.
- 希望以大于下表的减速比进行进一步减速时，可在电动机与减速机之间安装减速比为10的中间减速机。
这时的容许转矩为20N·m。
To reduce the speed beyond the gear ratio in the table, attach a decimal gearhead (gear ratio:10) between the gearhead and motor. In that case, the permissible torque is 20N·m.

■ 容许力矩单位 Allowance Torque Unit : 上段 Upside (N.m) /下段 Belowside (kgf.cm)

型号 Type	减速比 Gear Ratio	3	3.6	5	6	7.5	9	10	12.5	15	18	20	25	30	36	40	50	60	75	90	100	120	150	180	200
Z5D120-24GU	转速 Speed r/min	867	722	520	433	347	289	260	208	173	144	130	104	87	72	65	52	43	35	29	26	22	17	14	13
	5GU□KB	1.07	1.29	1.79	2.14	2.68	3.21	3.21	4.02	4.82	5.78	5.78	7.23	8.68	10.4	11.6	14.5	17.4	20.0	20.0	20.0	20.0	20.0	20.0	20.0
		10.5	12.6	17.5	21.0	26.2	31.5	31.5	39.4	47.2	56.7	56.7	70.9	85.0	102	113	142	170	200	200	200	200	200	200	200

■ 容许悬挂负载·容许轴向负载 To Allow The Hoisting Of The Load Allow Axial Load

电动机 (圆轴型) →P215页

Motor (Round shaft) →P215

减速机→P215页

Gearhead→P215

■ 减速机的容许负载惯性惯量 J Permissible Load Inertia J For Gearhead

→P215页→P215

● 圆轴型的转轴部分 Shaft Section Of Round Shaft Type

除重量及轴部外电动机外形与齿轮轴型相同。

Excluding weight and the shaft section motor shape are the same as those of the pinion shaft type.

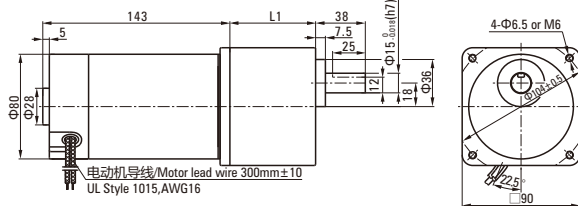
■ 外形图 (单位 mm) Dimensions (Unit mm)

减速器附有安装用螺丝 Mounting screws are included with gearhead.

● 导线型 Lead Wiring Type

重量 Weight : 电动机 Motor : 2.2kg

减速机 Gearhead : 1.5kg



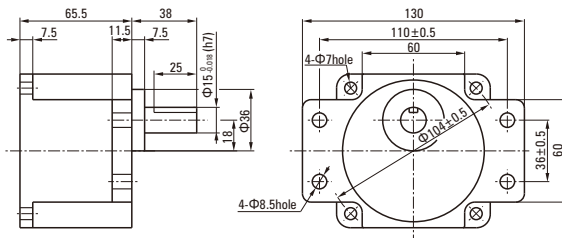
电动机型号 Motor Model	减速器型号 Gearhead Model	减速比 Gear Ratio	L1
Z5D120-12GU Z5D120-24GU Z5D120-90GU	5GU□KB	3~200	65.5

● 减速器型号的□中为减速比的数值 Enter the gear ratio in the box (□) within the model name

● 凸缘安装型减速机 Flange Mounting Reducer

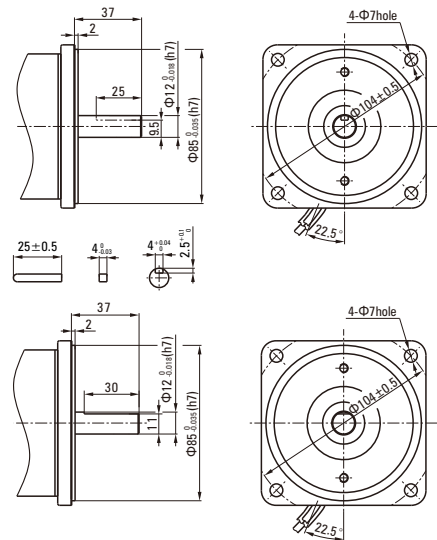
可安装在GU齿轮轴型上 Can be mounted on GU type gear shaft 5GU□K

重量 Weight: 1.5kg



● 键·键槽 (减速机附件)

Key·Keyway (The Key Is Included With The Gearhead)



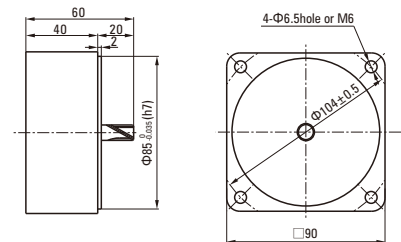
● 中间减速机 Decimal Gearhead

可安装在GU齿轮轴型上 Can be connected to GU pinion shaft type

电动机外形与齿轮轴型相同

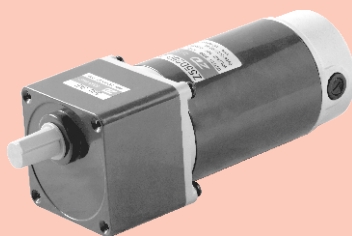
5GU10X

重量 Weight : 0.651kg



直流电动机 DC MOTORS

■ 250W □ 90mm



电机性能参数 Motor Performance Parameters

型号 Model	电压 Voltage V	功率 Power W	空载参数No-load Parameters		负载参数Load Parameters			电刷寿命 Brush Life H	电机重量 Motor Weight kg
			转速Speed	电流Current	转速Speed	力矩Torque	电流Current		
			r/min	A	r/min	mN.m	A		
Z55D250-24 □	24	250	3400	3.0Max.	3000	796	16.0	2000	3.2
Z55D250-90 □	90	250	3300	1.2Max.	3000	796	4.20	2000	3.2
Z55D250-220 □	220	250	3300	0.9Max.	3000	796	2.20	2000	3.2

● 电机电压、功率及转速可在配件尺寸等条件允许下根据客户要求定制。

Motor voltage, power and speed will be customized according to his requestment under the allowed circumstance of adoptable dimension.

种类 Type

● 电动机 Motor

机型 Type	型号Model		
	齿轮轴型 Pinion Shaft	圆轴型 Round Shaft	圆轴型 Round Shaft
导线型 Lead Wire Type	Z55D250-24GN	Z55D250-24A	Z55D250-24A1
	Z55D250-90GN	Z55D250-90A	Z55D250-90A1
	Z55D250-220GN	Z55D250-220A	Z55D250-220A1

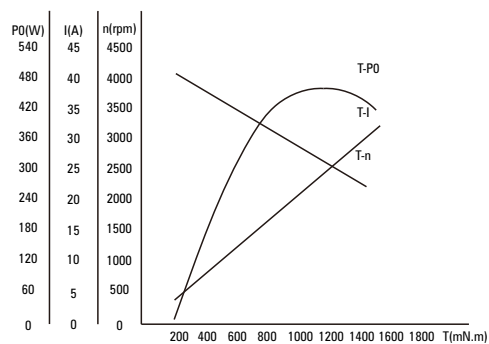
● 平行轴减速器 (另售) Parallel Shaft Gearhead (Sold Separately)

减速器种类 Gearhead Type	减速器型号 Gearhead Model	减速比 Gear Ratio
长寿命●低噪音 Long Life ● Low Noise	5GU□KB	3、3.6、5、6、7.5、9、10、12.5、15、18、20、25、30、36、40、50、60、75、90、100、120、150、180、200
	5GU10XK (中间减速器 Decimal Gearhead)	

● 减速器型号的□中为减速比的数值

Enter the gear ratio in the box (□) within the model name

● 电机特性曲线 Characteristic Curve Of Motor



● 电机接线图 Wiring Diagram Of Motor



● 标准引出线长度: 300mm±10, 型号: UL1015, 规格: AWG14; 电机引出线长度、型号在配件尺寸等条件允许的情况下可根据客户要求定制。

Standard length of lead wire: 300mm±10, model: UL1015, type: AWG14; lead wire length, model will be customerised by dient requestmant under allowed circumstance of adoptable dimension.

■ 装有减速器时的容许转矩 Gear Motor-Torque Table

- 减速器另售·中间减速器另售。
Gearheads are sold separately. Decimal gearheads are not available.
- 减速品型号的□中为减速比的数值。
Enter the gear ratio in the box (□) within the model name.
- □色表示与电动机同一方向运转，其他则为相反方向。
The colored background □ indicates the same rotating direction of the motor while the rotating direction of others are opposite.
- 转速是以电动机的额定转速为基准除以减速比而算出来的数值。实际转速将随负载大小变化而比所示数值减少2%~20%左右。
The speed is calculated by dividing the motor's synchronous speed by the gear ratio. The actual speed is 2%~20% less than the displayed value, depending on the size of the load.
- 希望以大于下表的减速比进行进一步减速时，可在电动机与减速机之间安装减速比为10的中间减速机。
这时的容许转矩为20N·m。
To reduce the speed beyond the gear ratio in the table, attach a decimal gearhead (gear ratio:10) between the gearhead and motor. In that case, the permissible torque is 20N·m.

■ 容许力矩单位 Allowance Torque Unit : 上段 Upside (N.m) /下段 Belowside (kgf.cm)

型号 Type	减速比 Gear Ratio	3	3.6	5	6	7.5	9	10	12.5	15	18	20	25	30	36	40	50	60	75	90	100	120	150	180	200
Z55D250-24GU	转速 Speed r/min	1000	833	600	500	400	333	300	240	200	167	150	120	100	83	75	60	50	40	33	30	25	20	17	15
	5GU□KB	1.93	2.32	3.22	3.87	4.83	5.80	5.80	7.25	8.70	10.4	10.4	13.1	15.7	18.8	20.0	20.0	20.0	20.0	20.0	20.0	20.0	20.0	20.0	20.0
		19.0	22.7	31.6	37.9	47.4	56.9	56.9	71.1	85.3	102	102	128	154	184	200	200	200	200	200	200	200	200	200	200

■ 容许悬挂负载·容许轴向负载 To Allow The Hoisting Of The Load Allow Axial Load

电动机 (圆轴型) →P215页 Motor (Round shaft) →P215
减速机→215页 Gearhead→P215

■ 减速机的容许负载惯性惯量 J Permissible Load Inertia J For Gearhead

→215页→P215

● 圆轴型的转轴部分 Shaft Section Of Round Shaft Type

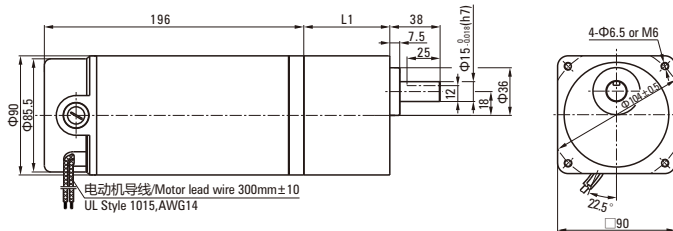
除重量及轴部外电动机外形与齿轮轴型相同。
Excluding weight and the shaft section motor shape are the same as those of the pinion shaft type.

■ 外形图 (单位 mm) Dimensions (Unit mm)

减速器附有安装用螺丝 Mounting screws are included with gearhead.

● 导线型 Lead Wiring Type

重量 Weight : 电动机 Motor : 3.2kg 减速器 Gearhead : 1.5kg

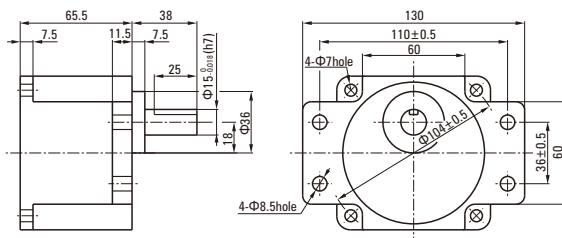


电动机型号 Motor Model	减速器型号 Gearhead Model	减速比 Gear Ratio	L1
Z55D250-24GU Z55D250-90GU Z55D250-220GU	5GU□KB	3~200	65.5

● 减速器型号的□中为减速比的数值 Enter the gear ratio in the box (□) within the model name

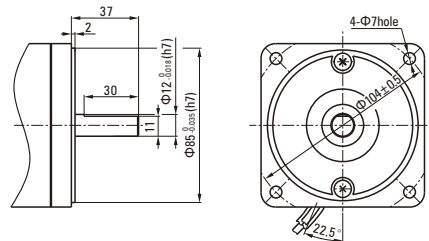
● 凸缘安装型减速器 Flange Mounting Reducer

可安装在GU齿轮轴型上 Can be mounted on GU type gear shaft 5GU□K
重量 Weight: 1.5kg



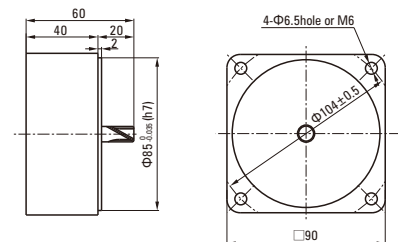
● 键·键槽 (减速器附件)

Key·Keyway (The Key Is Included With The Gearhead)



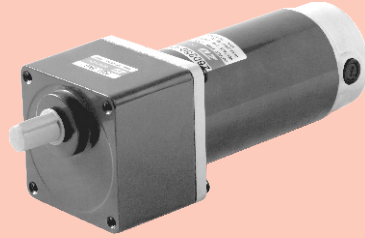
● 中间减速器 Decimal Gearhead

可安装在GU齿轮轴型上 Can be connected to GU pinion shaft type
电动机外形与齿轮轴型相同
5GU10X
重量 Weight : 0.651kg



直流电动机 DC MOTORS

■ 250W □ 104mm



电机性能参数 Motor Performance Parameters

型号 Model	电压 Voltage V	功率 Power W	空载参数No-load Parameters		负载参数Load Parameters			电刷寿命 Brush Life H	电机重量 Motor Weight kg
			转速Speed	电流Current	转速Speed	力矩Torque	电流Current		
			r/min	A	r/min	mN.m	A		
Z6D250-24 □	24	250	3400	3.0Max.	3000	796	16.0	2000	3.2
Z6D250-90 □	90	250	3300	1.0Max.	3000	796	4.00	2000	3.2
Z6D250-220□	220	250	3300	0.8Max.	3000	796	2.00	2000	3.2

●电机电压、功率及转速可在配件尺寸等条件允许下根据客户要求定制。

Motor voltage, power and speed will be customized according to his requestment under the allowed circumstance of adoptable dimension.

种类 Type

● 电动机 Motor

机型 Type	型号Model		
	齿轮轴型 Pinion Shaft	圆轴型 Round Shaft	圆轴型 Round Shaft
导线型 Lead Wire Type	Z6D250-24GU	Z6D250-24A	Z6D250-24A1
	Z6D250-90GU	Z6D250-90A	Z6D250-90A1
	Z6D250-220GU	Z6D250-220A	Z6D250-220A1

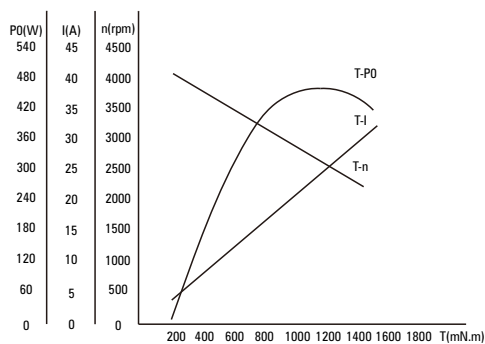
● 平行轴减速器 (另售) Parallel Shaft Gearhead (Sold Separately)

减速器种类 Gearhead Type	减速器型号 Gearhead Model	减速比 Gear Ratio
长寿命●低噪音 Long Life ● Low Noise	6GU□K	3、3.6、5、6、7.5、9、12.5、15、18、25、30、36、50、60、75、90、100、120、150、180、200

●减速器型号的□中为减速比的数值

Enter the gear ratio in the box (□) within the model name

● 电机特性曲线 Characteristic Curve Of Motor



● 电机接线图 Wiring Diagram Of Motor



●标准引出线长度: 300mm±10, 型号: UL1015, 规格: AWG14; 电机引出线长度、型号在配件尺寸等条件允许的情况下可根据客户要求定制。

Stanclard length of lead wire: 300mm±10, model: UL1015, type: AWG14; lead wire length, model will be customerised by dient requestmant under allowed circumstance of adoptable dimension.

■ 装有减速器时的容许转矩 Gear Motor-Torque Table

- 减速器另售·中间减速器另售。
Gearheads are sold separately. Decimal gearheads are not available.
- 减速品型号的□中为减速比的数值。
Enter the gear ratio in the box (□) within the model name.
- □色表示与电动机同一方向运转，其他则为相反方向。
The colored background □ indicates the same rotating direction of the motor while the rotating direction of others are opposite.
- 转速是以电动机的额定转速为基准除以减速比而算出来的数值。实际转速将随负载大小变化而比所示数值减少2%~20%左右。
The speed is calculated by dividing the motor's synchronous speed by the gear ratio. The actual speed is 2%~20% less than the displayed value, depending on the size of the load.
- 希望以大于下表的减速比进行进一步减速时，可在电动机与减速机之间安装减速比为10的中间减速机。
这时的容许转矩为40N·m。
To reduce the speed beyond the gear ratio in the table, attach a decimal gearhead (gear ratio:10) between the gearhead and motor. In that case, the permissible torque is 40N·m.

■ 容许力矩单位 Allowance Torque Unit : 上段 Upside (N.m) /下段 Belowside (kgf.cm)

型号 Type	减速比 Gear Ratio	3	3.6	5	6	7.5	9	12.5	15	18	25	30	36	50	60	75	90	100	120	150	180	200
Z6D250-24GN	转速 Speed r/min	1000	833	600	500	400	333	240	200	166	120	100	83	60	50	40	33	30	25	20	16	15
	6GU□K	1.93	2.32	3.22	3.87	4.83	5.80	7.25	8.70	10.4	13.1	15.7	18.8	26.1	31.3	39.2	40.0	40.0	40.0	40.0	40.0	40.0
		19.0	22.7	31.6	37.9	47.4	56.9	71.1	85.3	102	128	154	184	256	307	384	400	400	400	400	400	400

■ 容许悬挂负载·容许轴向负载 To Allow The Hoisting Of The Load Allow Axial Load

电动机 (圆轴型) →P215页 Motor (Round shaft) →P215
 减速机→215页 Gearhead→P215

■ 减速机的容许负载惯性惯量 J Permissible Load Inertia J For Gearhead

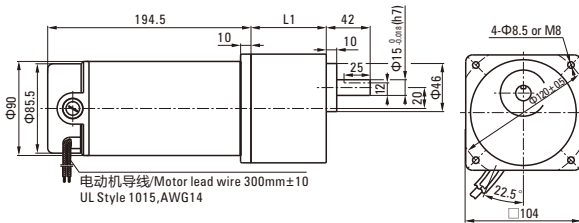
→215页→P215

■ 外形图 (单位 mm) Dimensions (Unit mm)

减速器附有安装用螺丝 Mounting screws are included with gearhead.

● 导线型 Lead Wiring Type

重量 Weight : 电动机 Motor : 3.2kg 减速器 Gearhead : 1.5kg



电动机型号 Motor Model	减速器型号 Gearhead Model	减速比 Gear Ratio	L1
Z6D250-24GU Z6D250-90GU Z6D250-220GU	6GU□K	3~200	72

- 减速器型号的□中为减速比的数值
Enter the gear ratio in the box (□) within the model name

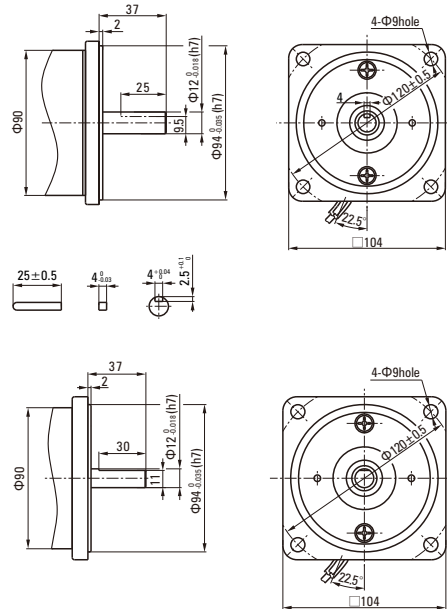
● 键·键槽 (减速器附件)

Key·Keyway (The Key Is Included With The Gearhead)

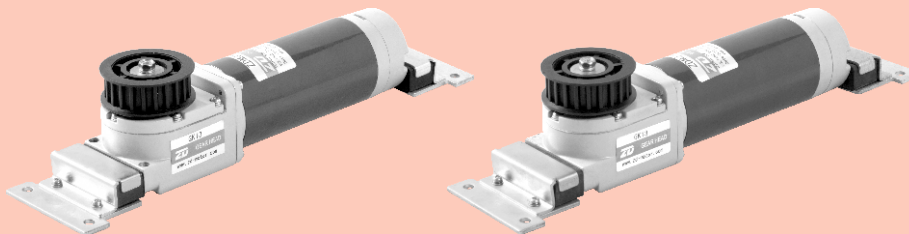


● 圆轴型的转轴部分 Shaft Section Of Round Shaft Type

除重量及轴部外电动机外形与齿轮轴型相同。
Excluding weight and the shaft section motor shape are the same as those of the pinion shaft type.



有刷开门电机 BRUSH DOOR MOTORS



产品特点 Product Characters

本产品采用DC永磁有刷马达做运转主体，可与微电脑控制系统方面对接，与电脑控制系统配合实现自我监察，制定最佳运作模式产品具有：噪声低、体积小、重量轻、寿命长、适用范围广等优点；同时可满足客户对自动门升级的需要。

This product uses DC permanent magnet brush motor to drive the whole system. Being able to be connected with microcomputer control system, it can achieve self-monitoring by working with computer control system, to develop the best mode of operation. Product has advantages as: low noise, small size, light weight, long life, wide range of applications etc. At the same time, it can meet the needs of customers to upgrade the automatic doors.

电机性能参数 Motor Performance Parameters

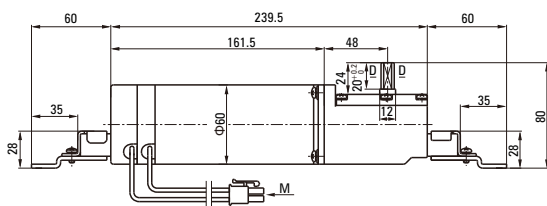
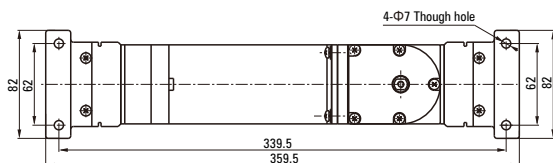
型号 Model	功率 Power W	电压 Voltage V	空载参数No-load Parameters		负载参数Load Parameters			整机允许力矩 Allowable Torque Motor		电机重量 Motor Weight kg
			转速Speed r/min	电流Current A	转速Speed r/min	力矩Torque mN.m	电Current A	GK8.5 mN.m	GK13 mN.m	
ZDMJ-1	60	24	2300	0.4Max.	1800	318	4.0	1840	2650	1.2
ZDMJ-2	60	90	2300	0.3Max.	1800	318	1.1			1.0

外形图 Dimensiond (单位Unit:mm)

减速器附有安装用螺丝 Mounting screws are included with gearhead

● 导线型 Lead Wiring Type

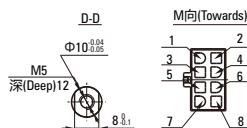
重量 Weight : 电动机 Motor : 1.8kg 减速器 Gearhead : 0.8kg



电动机型号 Motor Model	减速器型号 Gearhead Model	减速比 Gear Ratio
ZDMJ-1	GK□	8.5
ZDMJ-2		13

● 减速器型号的□中为减速比的数值

Enter the gear ratio in the box (□) within the model name



插孔意义 Meanings Of Pins							
1	2	3	4	5	6	7	8
Hcw	Hccw	+5V	Hgend	/	MOTOR GND	MOTOR +	MOTOR -

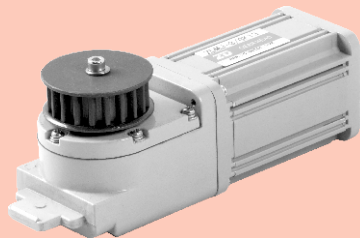
● 电机引出线型号:UL1015, AWG20, 红色&黑色, 引出线长度为500

主要技术要求 Main Data

- 1.基本技术参数: DC24V, 600W, 2500RPM S1, B CLASS, IP40
- 2.额定力矩: 229mN.m
- 3.光机空载噪音: < 50dB, L=50cm
- 4.耐电压: AC660V, 1S, 泄漏电流 < 5mA
- 5.绝缘电阻: > 50MΩ500V
- 6.工作寿命: 4000H
- 7.环保要求: 符合ROHS指令

- 1.Basic specification: DC24V, 600W, 2500RPM S1, B CLASS, IP40
- 2.Rated torque of bare motor: 229mN.m
- 3.No-load noise of whole motor: < 50dB, L=50cm
- 4.VE: AC660V, 1S, 5mA
- 5.Insulation resistance > 50MΩ500V
- 6.Life: 4000H
- 7.ROHS conformable

无刷开门电机 BRUSHLESS DOOR MOTORS



产品特点 Product Characters

本产品采用DC无刷直流马达做运转主体，可更方便的与微电脑控制系统对接，更方便的与电脑控制系统配合实现自我监察，制定最佳运作模式，如速度、推动力、制动力等。产品具有：寿命长、噪声低、体积小、重量轻、适用范围广等优点；同时可满足客户对自动门升级的需要。

This product adopted PMDC brush motor as the main part of rotor. It can be matched with computer system of control. It can realise self-supervise through matching with computer, and you can set the best working model. Such as speed, impetus, resistant power and so on. It has characters of low noise, small volume. Light, long life and wide use. Meanwhile, it can meet the customers' request of update.

电机性能参数 Motor Performance Parameters

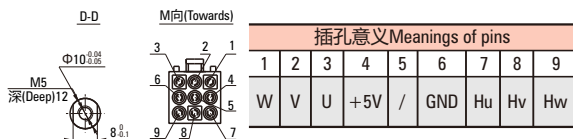
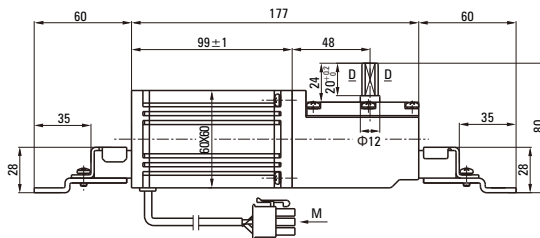
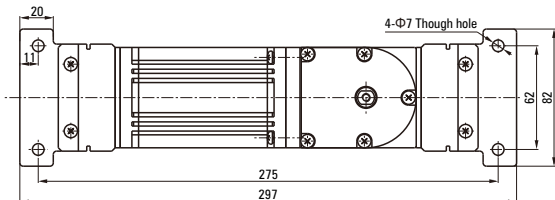
型号 Model	功率 Power W	电压 Voltage V	空载参数No-load Parameters		负载参数Load Parameters			整机允许力矩 Allowable Torque Motor		电机重量 Motor Weight kg
			转速Speed r/min	电流Current A	转速Speed r/min	力矩Torque mN.m	电Current A	GK8.5 mN.m	GK13 mN.m	
ZDMJ-3	60	24	3000	0.6Max.	2500	229	4.0	1320	2000	1.2

外形图 Dimensiond (单位Unit:mm)

减速器附有安装用螺丝 Mounting screws are included with gearhead

● 导线型 Lead Wiring Type

重量 Weight : 电动机 Motor : 1.2kg 减速器 Gearhead : 0.8kg



插孔意义 Meanings of pins								
1	2	3	4	5	6	7	8	9
W	V	U	+5V	/	GND	Hu	Hv	Hw

电动机型号 Motor Model	减速器型号 Gearhead Model	减速比 Gear Ratio
ZDMJ-3	GK□	8.5
		13

● 减速器型号的□中为减速比的数值

Enter the gear ratio in the box (□) within the model name

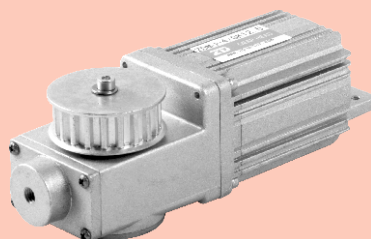
主要技术要求 Main Data

- 1.基本技术参数: DC24V, 60W, 2500RPM S1, B CLASS, IP40
- 2.额定力矩: 229mN.m
- 3.光机空载噪音: < 50dB, L=40cm
- 4.耐电压: AC660V, 1S, 泄漏电流 < 5mA
- 5.绝缘电阻: > 50MΩ500V
- 6.工作寿命: 4000H
- 7.环保要求: 符合ROHS指令

- 1.Basic specification: DC24V, 60W, 2500RPM S1, B CLASS, IP40
- 2.Rated torque of bare motor: 229mN.m
- 3.No-load noise of whole motor: < 50dB, L=50cm
- 4.VE: AC660V, 1S, 5mA
- 5.Insulation resistance > 50MΩ500V
- 6.Life: 4000H
- 7.ROHS conformable

无刷开门电机

BRUSHLESS DOOR MOTORS



产品特点 Product Characters

本产品采用DC无刷直流马达做运转主体，可更方便的与微电脑控制系统对接，更方便的与电脑控制系统配合实现自我监察，制定最佳运作模式，如速度、推动力、制动力等。产品具有：寿命长、噪声低、体积小、重量轻、适用范围广等优点；同时可满足客户对自动门升级的需要。

This product adopted PMDC brush motor as the main part of rotor. It can be matched with computer system of control. It can realise self-supervise through matching with computer, and you can set the best working model. Such as speed, impetus, resistant power and so on. It has characters of low noise, small volume. Light, long life and wide use. Meanwhile, it can meet the customers' request of update.

电机性能参数 Motor Performance Parameters

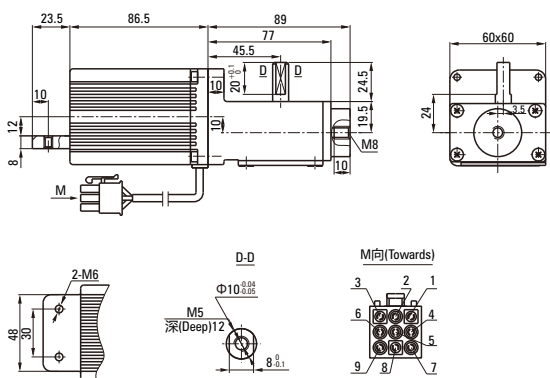
型号 Model	功率 Power W	电压 Voltage V	空载参数No-load Parameters		负载参数Load Parameters			整机允许力矩 Allowable Torque Motor GK12.5 mN.m	电机重量 Motor Weight kg
			转速Speed r/min	电流Current A	转速Speed r/min	力矩Torque mN.m	电Current A		
ZDMJ-4	60	24	3000	0.6Max.	2500	229	4.0	1950	1.0

外形图 Dimension (单位Unit:mm)

减速器附有安装用螺丝 Mounting screws are included with gearhead

● 导线型 Lead Wiring Type

重量 Weight : 电动机 Motor : 1.0kg 减速器 Gearhead : 0.5kg



电动机型号 Motor Model	减速器型号 Gearhead Model	减速比 Gear Ratio
ZDMJ-4	GK□	12.5

- 减速器型号的□中为减速比的数值
Enter the gear ratio in the box (□) within the model name

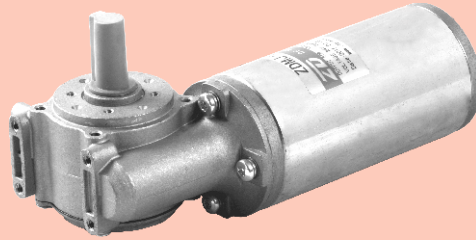
插孔意义 Meanings Of Pins								
1	2	3	4	5	6	7	8	9
U	V	W	+5V	/	GND	Hu	Hv	Hw

主要技术要求 Main Data

- 1.基本技术参数: DC24V, 60W, 2500RPM S1, B CLASS, IP40
- 2.额定力矩: 229mN.m
- 3.光机空载噪声: < 50dB, L=50cm
- 4.耐电压: AC660V, 1S, 泄漏电流 < 5mA
- 5.绝缘电阻: > 50MΩ2500V
- 6.工作寿命: 4000H
- 7.环保要求: 符合ROHS指令

1. Basic specification: DC24V, 60W, 2500RPM S1, B CLASS, IP40
2. Rated torque of bare motor: 229mN.m
3. No-load noise of whole motor: < 50dB, L=50cm
4. VE: AC660V, 1S, 5mA
5. Insulation resistance > 50MΩ2500V
6. Life: 4000H
7. ROHS conformable

有刷开门电机 BRUSH DOOR MOTORS



产品特点 Product Characters

本产品采用DC永磁有刷马达做运转主体，可与微电脑控制系统方面对接，与电脑控制系统配合实现自我监察，制定最佳运作模式产品具有：噪声低、体积小、重量轻、寿命长、适用范围广等优点；同时可满足客户对自动门升级的需要。

This product uses DC permanent magnet brush motor to drive the whole system. Being able to be connected with microcomputer control system, it can achieve self-monitoring by working with computer control system, to develop the best mode of operation. Product has advantages as: low noise, small size, light weight, long life, wide range of applications etc. At the same time, it can meet the needs of customers to upgrade the automatic doors.

电机性能参数 Motor Performance Parameters

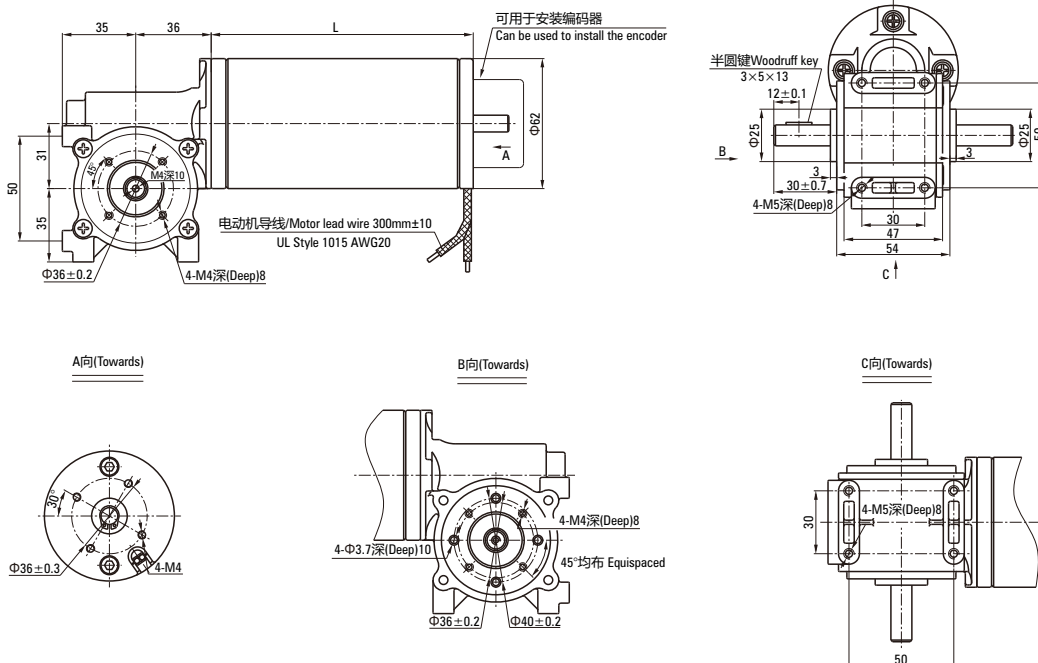
型号 Model	功率 Power W	电压 Voltage V	空载参数No-load Parameters		负载参数Load Parameters			整机允许力矩 Allowable Torque Motor		电机重量 Motor Weight kg
			转速Speed r/min	电流Current A	转速Speed r/min	力矩Torque mN.m	电Current A	GX10 mN.m	GX15 mN.m	
ZDMJ-5A	90	24	3900	1.1Max.	3350	257	5.4	1539	2309	1.8
ZDMJ-5B	90	36	4250	0.9Max.	3350		3.7			1.8
ZDMJ-5C	90	48	3900	0.7Max.	3350		2.7			1.8
ZDMJ-5D	90	60	4000	0.5Max.	3350		2.2			1.8

外形图 Dimensiond (单位Unit:mm)

减速器附有安装用螺丝 Mounting screws are included with gearhead

● 导线型 Lead Wiring Type

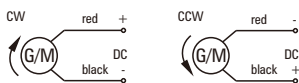
重量 Weight : 电动机 Motor : 1.8kg 减速器 Gearhead : 0.8kg



电动机型号 Motor Model	电动机长度 (L) Motor Length(L)	减速器型号 Gearhead Model	减速比 Gear Ratio
ZDMJ-5A	125.0	GK□	10
ZDMJ-5B	113.5		
ZDMJ-5C	113.5		15
ZDMJ-5D	125.0		

- 减速器型号的□中为减速比的数值
Enter the gear ratio in the box (□) within the model name

● 电机接线图 Wiring Diagram Of Motor

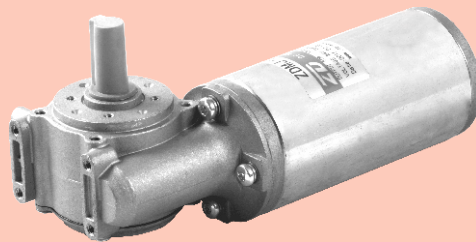


- 转向：红“+”、黑“-”时，从轴伸端看为顺时针；客户要求或特殊情况除外；
Turn: red "+", black "-", from the axis of the shaft to see the end of the clockwise; Exception of the user requirements or special circumstances;
- 标准引出线长度：300mm±10，型号：UL1015 规格：AWG20；
Standard lead length: 300mm±10, type: UL1015 specification: AWG20;

■ 主要技术要求 Main Data

- | | |
|------------------------------|--|
| 1.基本技术参数: 详见参数性能表 | 1.Basic specification: See parameter performance table |
| 2.其他参数: S1工作制, B 级绝缘, IP20 ; | 2.Rated torque of bare motor: S1 working system, class B insulation, IP20; |
| 3.光机空载噪音: < 50dB, L=40cm | 3.No-load noise of whole motor: < 50dB, L=40cm |
| 4.耐电压: AC660V, 1S, 5mA | 4.VE: AC660V, 1S, 5mA |
| 5.绝缘电阻: > 20MΩ, 500V | 5.Insulation resistance > 20MΩ, 500V |
| 6.工作寿命: > 2500H | 6.Life: > 2500H |
| 7.环保要求: 符合ROHS指令 | 7.ROHS conformable |

无刷开门电机 BRUSHLESS DOOR MOTORS



产品特点 Product Characters

本产品采用DC无刷直流马达做运转主体，可更方便的与微电脑控制系统对接，更方便的与电脑控制系统配合实现自我监察，制定最佳运作模式，如速度、推动力、制动力等。产品具有：寿命长、噪声低、体积小、重量轻、适用范围广等优点；同时可满足客户对自动门升级的需要。

This product adopted PMDC brush motor as the main part of rotor. It can be matched with computer system of control. It can realise self-supervise through matching with computer, and you can set the best working model. Such as speed, impetus, resistant power and so on. It has characters of low noise, small volume. Light, long life and wide use. Meanwhile, it can meet the customers' request of update.

电机性能参数 Motor Performance Parameters

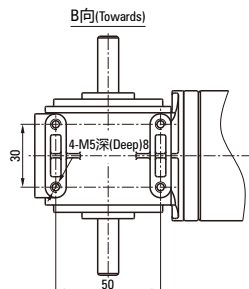
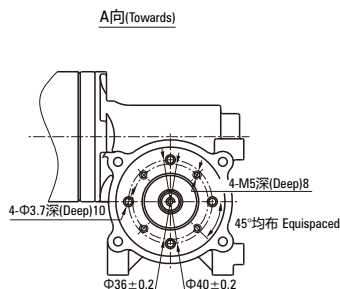
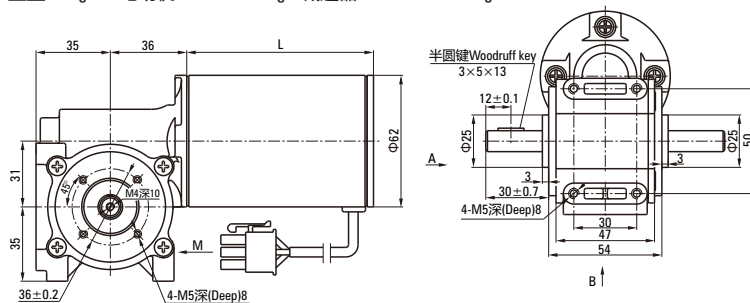
型号 Model	功率 Power W	电压 Voltage V	空载参数No-load Parameters		负载参数Load Parameters			整机允许力矩 Allowable Torque Motor		电机重量 Motor Weight kg
			转速Speed r/min	电流Current A	转速Speed r/min	力矩Torque mN.m	电Current A	GX10 mN.m	GX15 mN.m	
ZDMJ-6	60	24	3400	0.7Max.	3000	191	3.5	1146	1719	1.8

外形图 Dimensiond (单位Unit:mm)

减速器附有安装用螺丝 Mounting screws are included with gearhead

● 导线型 Lead Wiring Type

重量 Weight : 电动机 Motor : 1.8kg 减速器 Gearhead : 0.8kg

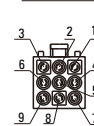


电动机型号 Motor Model	电动机长度(L) Motor Length(L)	减速器型号 Gearhead Model	减速比 Gear Ratio
ZDMJ-6	88	GK□	10 15

● 减速器型号的□中为减速比的数值

Enter the gear ratio in the box (□) within the model name

M向(Towards)



插孔意义 Meanings Of Pins								
1	2	3	4	5	6	7	8	9
U	V	W	Vcc	/	GND	Hu	Hv	Hw

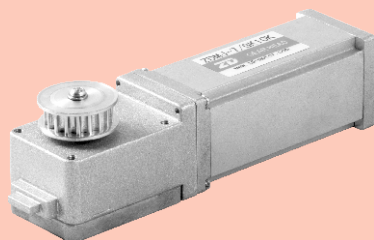
主要技术要求 Main Data

- 1.基本技术参数: DC24V, 60W, 3000RPM S1, B CLASS, IP20
- 2.光机空载噪音: < 50dB, L=40cm
- 3.耐电压: AC660V, 1S, 5mA
- 4.绝缘电阻: > 50MΩ500V
- 5.工作寿命: ≥ 5000H

- 1.Basic specification: DC24V,60W,2500RPM S1,B CLASS,IP20
- 2.No-load noise of whole motor: < 50dB,L=40cm
- 3.VE: AC660V,1S,5mA
4. Insulation resistance > 50MΩ500V
- 5.Life: ≥ 5000H

无刷开门电机

BRUSHLESS DOOR MOTORS



产品特点 Product Characters

本产品采用DC无刷直流马达做运转主体，可更方便的与微电脑控制系统对接，更方便的与电脑控制系统配合实现自我监察，制定最佳运作模式，如速度、推动力、制动力等。产品具有：寿命长、噪声低、体积小、重量轻、适用范围广等优点；同时可满足客户对自动门升级的需要。

This product adopted PMDC brush motor as the main part of rotor. It can be matched with computer system of control. It can realise self-supervise through matching with computer, and you can set the best working model. Such as speed, impetus, resistant power and so on. It has characters of low noise, small volume. Light, long life and wide use. Meanwhile, it can meet the customers' request of update.

电机性能参数 Motor Performance Parameters

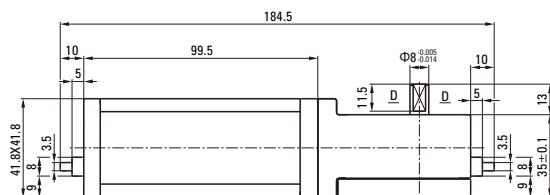
型号 Model	功率 Power W	电压 Voltage V	空载参数No-load Parameters		负载参数Load Parameters			整机允许力矩 Allowable Torque Motor mN.m	电机重量 Motor Weight kg
			转速Speed r/min	电流Current A	转速Speed r/min	力矩Torque mN.m	电Current A		
ZDMJ-7	25	24	3100	0.6Max.	2500	95.5	1.8	573	1.0

外形图 Dimensiond (单位Unit:mm)

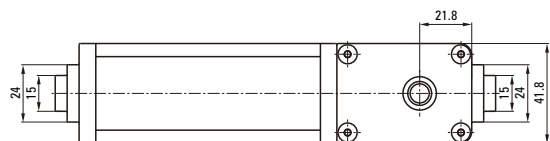
减速器附有安装用螺丝 Mounting screws are included with gearhead

● 导线型 Lead Wiring Type

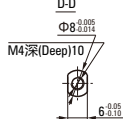
重量 Weight : 电动机 Motor : 1.0kg 减速器 Gearhead : 0.4kg



引线Lead: 9*AWG24
彩色排线 Rainbow cable, L=350mm

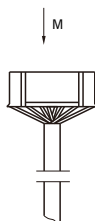


M向(Towards)



电动机型号 Motor Model	减速器型号 Gearhead Model	减速比 Gear Ratio
ZDMJ-7	GK□	10

● 减速器型号的□中为减速比的数值
Enter the gear ratio in the box (□) within the model name



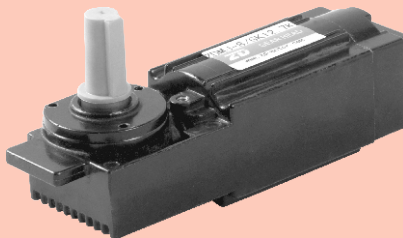
插孔意义 Meanings Of Pins							
1	2	3	4	5	6	7	8
U	W	V	Hw	Hu	Hv	Vcc	GND

主要技术要求 Main Data

- 1.基本技术参数: DC24V, 25W, 250RPM S1, B CLASS, IP20
- 2.光机空载噪音: < 50dB, L=40cm
- 3.耐电压: AC660V, 1S, 5mA
- 4.绝缘电阻: > 50MΩ500V
- 5.工作寿命: ≥ 5000H

- 1.Basic specification: DC24V,25W,250RPM S1,B CLASS,IP20
- 2.No-load noise of whole motor: < 50dB,L=40cm
- 3.VE: AC660V,1S,5mA
- 4.Insulation resistance > 50MΩ500V
- 5.Life: ≥ 5000H

无刷开门电机 BRUSHLESS DOOR MOTORS



产品特点 Product Characters

本产品采用DC无刷直流马达做运转主体，可更方便的与微电脑控制系统对接，更方便的与电脑控制系统配合实现自我监察，制定最佳运作模式，如速度、推动力、制动力等。产品具有：寿命长、噪声低、体积小、重量轻、适用范围广等优点；同时可满足客户对自动门升级的需要。

This product adopted PMDC brush motor as the main part of rotor. It can be matched with computer system of control. It can realise self-supervise through matching with computer, and you can set the best working model. Such as speed, impetus, resistant power and so on. It has characters of low noise, small volume. Light, long life and wide use. Meanwhile, it can meet the customers' request of update.

电机性能参数 Motor Performance Parameters

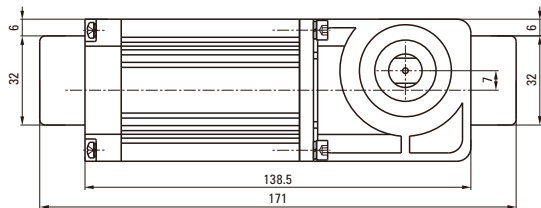
型号 Model	功率 Power W	电压 Voltage V	空载参数No-load Parameters		负载参数Load Parameters			整机允许力矩 Allowable Torque Motor GK12.7 mN.m	电机重量 Motor Weight kg
			转速Speed r/min	电流Current A	转速Speed r/min	力矩Torque mN.m	电Current A		
ZDMJ-8	40	24	4300	0.6Max.	3000	127	2.5	1455	1.5

外形图 Dimensiond (单位Unit:mm)

减速器附有安装用螺丝 Mounting screws are included with gearhead

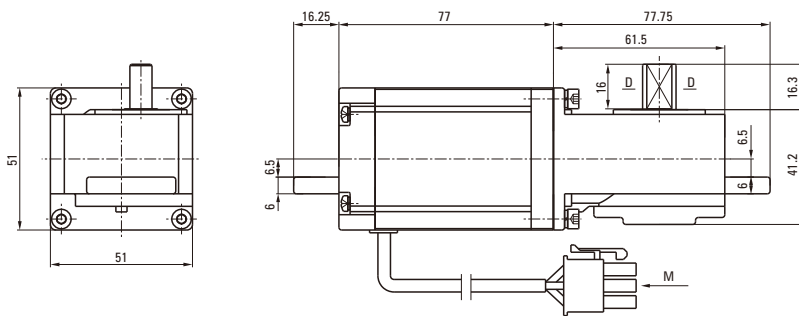
● 导线型 Lead Wiring Type

重量 Weight : 电动机 Motor : 1.5kg 减速器 Gearhead : 0.7kg



电动机型号 Motor Model	减速器型号 Gearhead Model	减速比 Gear Ratio
ZDMJ-8	GK□	12.7

- 减速器型号的□中为减速比的数值
Enter the gear ratio in the box (□) within the model name



插孔意义 Meanings Of Pins								
1	2	3	4	5	6	7	8	9
U	V	W	Vcc	/	GND	Hu	Hv	Hw

主要技术要求 Main Data

1. 基本技术参数: DC24V, 40W, 236RPM S1, B CLASS, IP40
2. 光机空载噪音: < 50dB, L=40cm
3. 耐电压: AC660V, 1S, 5mA
4. 绝缘电阻: > 50MΩ500V
5. 工作寿命: ≥ 5000H

1. Basic specification: DC24V, 40W, 236RPM S1, B CLASS, IP40
2. No-load noise of whole motor: < 50dB, L=40cm
3. VE: AC660V, 1S, 5mA
4. Insulation resistance > 50MΩ500V
5. Life: ≥ 5000H